



Dump Chief - Series 1500 Industrial Parts & Operator's Manual

Includes operating, adjustment, lubrication, maintenance, repair parts and safety instructions for Byron Series 1500 Industrial Dump Carts with serial numbers C96001 and higher or 3571012 and higher.

P/N 90598 Rev. A Sept. 1996

TABLE OF CONTENTS

NUMERICAL PARTS INDEX	1
INTRODUCTION	A
SAFETY PRECAUTIONS	B
INSTRUCTIONS AND SAFETY WARNING SIGNS	C
INSTRUCTIONS FOR INSTALLING AND REPHASING LIFT CYLINDERS IN THE FIELD	E
MAINTENANCE	F
ORDERING REPAIR PARTS	G
LIMITED WARRANTY	G
WARRANTY PROCEDURE	H
REPAIR PARTS SECTION	1
TANK & RELATED PARTS	2
TANK & RELATED PARTS	3
ELEVATOR & RELATED PARTS	4
ELEVATOR & RELATED PARTS	5
FRAME & WHEELS	6
FRAME & WHEELS	7
TONGUE & RELATED PARTS	8
TONGUE & RELATED PARTS	9
WEIGHT SCALE PARTS	10
WEIGHT SCALE PARTS	11
FLARED EXTENSIONS	12
FLARED EXTENSIONS	13
POUR LIP & BOX EXTENSIONS	14
POUR LIP & BOX EXTENSIONS	15
HYDRAULIC SYSTEM	16
HYDRAULIC SYSTEM	17
FRONT LIFT CYLINDER	18
REAR LIFT CYLINDER	19
TILT CYLINDER	20

NUMERICAL PARTS INDEX

<i>P/N</i>	<i>Page</i>	<i>P/N</i>	<i>Page</i>	<i>P/N</i>	<i>Page</i>	<i>P/N</i>	<i>Page</i>
11674 11	36117 7, 11	48098 18, 19	58033 7, 11
	_____	36118 5	48099 18, 19		_____
22199 13	36119 3	48101 18, 19	60157 15
22200 13	36121 9	48108 18, 19	60158 15
22202 13	36122 9, 11		_____	60795 9
22203 13	36293 11	51335 7	60879 3, 7
22205 13	38054 3	51754 7		_____
22729 13	38055 3	51755 7	70001 3
28022 13, 15		_____	52059 7, 11	70276 11
28025 15	41799 5, 17	52068 11	70278 11
28026 15	41801 5, 17, 18	52429 7	70386 7
28027 13, 15		19, 20	52523 7	70387 7
28065 15	41803	5, 7, 17	52525 7		_____
28066 15	42873 17	52820 9	90063 3
	_____	43137 17	53354 11	90080 3
32059 5, 7, 17	43210 17	53378 7	90092 3
32060 5, 7, 17	43211 17	58005 7	90096 3
32095 7, 17	48012 20	58006 5	90213 3
32096 7, 17	48013 20	58009 7	90215 3
32672 11	48014 20	58010 5	90224 7
32742 9	48015 20	58011 5	90225 3
32757 3	48052 17	58015 7, 11	90264 7
32888 13	48054 17	58018 7, 11	90266 9
33213 9	48069 17	58021 7, 11	90288 7
35315 9	48075 17	58024 7, 11	90452 3
35640 5	48095 18, 19, 20	58027 7, 11	90518 9
35706 9	48097 18, 19	58030 7, 11		

byron®

DUMP CHIEF

Model 1514

Industrial



INTRODUCTION

The BYRON Dump Chief family of dump carts is designed and built to be used in conjunction with the BYRON 8400, 8420, 9400 or any late model tractor with 2000 PSI (137 bar) hydraulic system capacity. With the wide range of models and options available, the BYRON Dump Chief meets the needs of today's harvesting requirements, providing years of dependable, low maintenance service. We recommend that the operator of this equipment become familiar with all the material in this manual as well as any additional manuals pertaining to the tractor being used so as to optimize the productivity of the equipment and safety of the user.

TABLE OF CONTENTS

INTRODUCTION	C
SAFETY PRECAUTIONS	D
INSTRUCTION & SAFETY WARNING SIGNS	E
LIFT CYLINDER PHASING INSTRUCTIONS	F
MAINTENANCE	G
ORDERING REPAIR PARTS	H
LIMITED WARRANTY	H
WARRANTY PROCEDURE	I
CONTENTS OF REPAIR PARTS SECTION	J
REPAIR PARTS SECTION	2 - 20
NUMERICAL PARTS INDEX	



SAFETY PRECAUTIONS



READ AND UNDERSTAND ALL OF THE INSTRUCTIONS IN THIS MANUAL BEFORE ATTEMPTING TO OPERATE THIS MACHINE

- Read Operator's section of this manual thoroughly.
- Keep clear of danger areas. Never place any part of the body between the box and frame while the box is in the raised position.
- Use extreme caution when towing dump cart over uneven ground. Always dump with cart on level ground. Do not dump downhill.
- Do not raise box unless the cart is positioned beside a receiving container in proper unloading position.
- The tire opposite the dumping side should be loaded with a minimum of 140 (530 L) gallons of fluid.
- Keep tire pressure at recommended levels.
- Do not exceed 25 MPH (40 Kph) when towing cart.
- **DO NOT LOAD MORE THAN 20,000 POUNDS (9,072 kg) ON A 1514 INDUSTRIAL CART.**
- Always maintain oil level in the power unit oil reservoir. Pumping air into the cart hydraulic system will cause uneven cylinder pressures, which can lead to severe twisting of the dump box and frame.
- When parked, block wheels to prevent cart from rolling.
- Disconnect or disengage all power sources or drives before adjusting, lubricating or repairing this machine.
- When replacing hydraulic hoses or other hydraulic components with other than original equipment, replacement parts must meet or exceed 3500 PSI (240 bar) operating pressure.

FAILURE TO COMPLY WITH THESE INSTRUCTIONS WILL VOID ANY WARRANTY LIABILITY OF THE MANUFACTURER.





**DEVELOP SAFE OPERATING HABITS FOR YOURSELF AND INSIST THAT ANYONE ELSE OPERATING THIS MACHINE DO THE SAME.
REMEMBER...SAFETY IS EVERYONE'S CONCERN!**



INSTRUCTIONS AND SAFETY WARNING SIGNS

The signs shown on this page are placed on the machine to warn of hazards or remind the operator of important procedures to be followed when using this equipment. The warnings are for your personal safety and the safety of those working around you. **OBSERVE THESE SIGNS!** If the decals become worn or illegible, replace them with new decals. See repair parts section of this manual for location and part numbers of these signs.

<p align="center">IMPORTANT OPERATING INSTRUCTIONS BLEEDING AND PURGING</p> <p>The hydraulic circuit that raises and lowers the dump box must be bled and purged of air each day before operating the dump functions.</p> <p>STEP 1. (Dump carts only) When first connecting hoses from a dump cart to the remote outlets on the power unit, air must be bled from the hoses before attempting to purge cylinders. Loosen "down" hose end at front lift cylinder one turn, and with power unit engine running, place "DUMP 1" switch in the "LOWER" position to bleed air from the hoses. When no more air comes from hose end, re-tighten fitting.</p> <p>STEP 2. Purge dump box lift circuit by placing "DUMP 1" switch in the "LOWER" position for 60 seconds to purge air from circuit.</p> <p>STEP 3. Place "DUMP 1" switch in "RAISE" position and observe lift cylinders to make sure they extend evenly. If cylinders do not extend evenly, repeat step 2. When both cylinders extend evenly, hold switch in "RAISE" position for 60 seconds after box reaches top of its travel.</p> <p>STEP 4. Repeat steps (2) and (3) five times or more.</p> <p>After initial daily purging, during normal operation when dumping box, hold "DUMP 1" switch a minimum of 5 seconds after the cylinders reach the end of their stroke in each direction.</p> <p>IMPORTANT: Failure to follow daily purging instructions can result in severe damage to lift cylinders and dump box elevator frame.</p> <p>Never lower dump box when power unit engine is shut down. Always lower box with hydraulic pressure.</p> <p>ON DUMP CARTS ONLY: Do not exceed 20,000 lbs. (9072 kg.) load on 1500 series, or 18,000 lbs. (8163 kg.) load on 1300 series dump carts.</p> <p>Keep hydraulic reservoir filled to recommended level to avoid chance of air being drawn into the system.</p> <div style="border: 1px solid black; padding: 5px; margin-top: 10px;">  <p>DUMP CARTS ONLY - THE TIRE OPPOSITE THE DUMP SIDE SHOULD BE FULLY LOADED WITH LIQUID OR A COUNTER WEIGHT MUST BE INSTALLED. DO NOT RAISE BOX UNLESS MACHINE IS STOPPED BESIDE A RECEIVING TRUCK. USE EXTREME CAUTION WHEN DUMPING ON UNEVEN GROUND. READ OPERATORS MANUAL BEFORE SERVICING MACHINE.</p> </div>	<p align="center">LAS INSTRUCCIONES ACTIVAS IMPORTANTES LA SANGRI'A Y PURGANDO</p> <p>El circuito hidráulico que levanta y rebaja la caja de basurero debe sangrarse y purgada de aire cada día antes de operar las funciones de basurero.</p> <p>EL PASO 1. (El basurero transporta únicamente) Cuando mangueras conectores primeras desde un carrito de basurero a las salidas remotas sobre la unidad de poder, el aire debe sangrarse desde las mangueras antes de intentar de purgar cilindros. Desasa "abajo" fin de manguera en el cilindro anterior de elevación un turno, y con el motor de unidad de poder corriendo, poniendo "BASURERO 1" interruptor en la "MA'S INFERIOR" posición de sangrar aire desde las mangueras. Cuando ningún más aire viene desde el fin de manguera, re-aprieta adaptar.</p> <p>EL PASO 2. El circuito de elevación de caja de basurero de purga por poner "BASURERO 1" interruptor en la "MA'S INFERIOR" posición para 60 segundos para purgar aire desde el circuito.</p> <p>EL PASO 3. El lugar "EL BASURERO 1" al interruptor en "ALZA" ubica y observa cilindros de elevación para asegurar ellos extenden igualmente. Si los cilindros no extienden igualmente, paso de repetición 2. Cuando los ambos cilindros extienden igualmente, retienen interruptor en "ALZA" la posición para 60 segundos después de alcances de caja supera de su viaje.</p> <p>EL PASO 4. La repetición camina (2) y (3) cinco veces o más.</p> <p>Después de inicial diario purgatorio, durante la operación normal cuando la caja de dompeo, retiene "BASURERO 1" cambiar un mínimo de 5 segundos después de los cilindros alcanzar el fin de su golpe en cada dirección.</p> <p>IMPORTANTE: El fracaso para seguir instrucciones purgatorias diarias puede resultar en daño severo para levantar ascensor de caja de basurero y cilindros marco.</p> <p>Nunca rebajar la caja de basurero cuando el motor de unidad de poder se cierra abajo. Siempre rebajar caja con la presión hidráulica.</p> <p>SOBRE EL BASURERO TRANSPORTA U'NICO: No exceden 9072 kg. carga sobre 1500 serie, o 8163 kg. carga sobre 1300 carritos de basurero de serie.</p> <p>Guarde depósito hidráulico llenado a el nivel recomendado para evitar oportunidad de aire siendo envuelto en el sistema.</p> <div style="border: 1px solid black; padding: 5px; margin-top: 10px;">  <p>EL BASURERO TRANSPORTA U'NICO - EL Oponente de LLANTA EL LADO DE BASURERO DEBERIA TOTALMENTE CARGARSE CON EL LIQUIDO O UN PESO CONTRARIO DEBE INSTALARSE. NO LEVANTAN CAJA A MENOS QUE LA QUE MAQUINA SE PARE AL LADO DE UN RECIBIDA CAMION. USE EL CUIDADO EXTREMO CUANDO DESCARGANDO SOBRE EL TERRENO CERRIL. LEA MANUAL DE OPERADOR ANTES DE ATENDER MAQUINA.</p> </div> <p align="right"><small>P/N 90096</small></p>
--	---

**FOR PROPER OPERATION OF THIS UNIT
1400 LBS. OF BALLAST IS REQUIRED
ON THE SIDE OPPOSITE DUMP**

90288

**THIS TIRE HAS BEEN FILLED
WITH 140 GALLONS OF A
CALCIUM CHLORIDE SOLUTION**

90264

<p> PELIGRO</p> <p>El reloj para el poder eléctrico superior raya</p> <p>El contacto puede resultar en la muerte o daño serio por la electrocucion</p> <p>Procede cuidadosamente debajo líneas eléctricas superiores y alrededor polos de utilidad</p>		<p> DANGER</p> <p>Watch for overhead power lines</p> <p>Contact may result in serious injury or death by electrocution</p> <p>Proceed cautiously under overhead electrical lines and around utility poles</p> <p align="right"><small>90452</small></p>
--	---	---

**IMPORTANT
DURING FIRST 12 HOURS OF OPERATION
RETORQUE WHEEL LUG NUTS EVERY 2 HOURS
THIS WHEEL: 250-330 FT. LBS.
CHECK TORQUE PERIODICALLY**

90516

 **MUCHO CUIDADO**

 **WARNING**

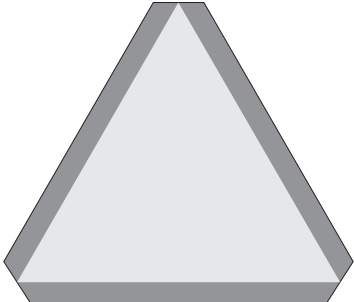
No toman este vehículo fuera del campo con ninguna carga en la langosta.

No conducen o remolcan este vehículo en la velocidad de carretera cuando cargó.

Do not take this vehicle out of the field with any load in the hopper.

Do not drive or tow loaded vehilce at highway speeds.

90470



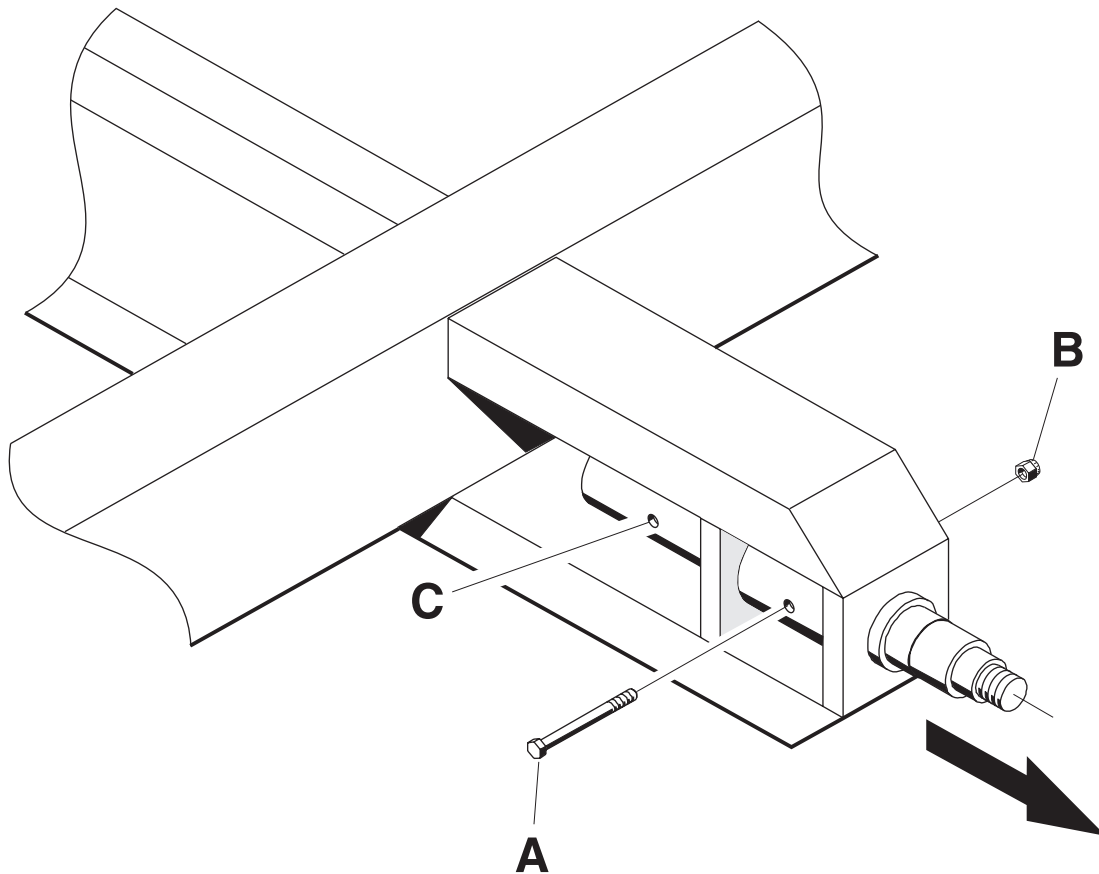


FIG. 1

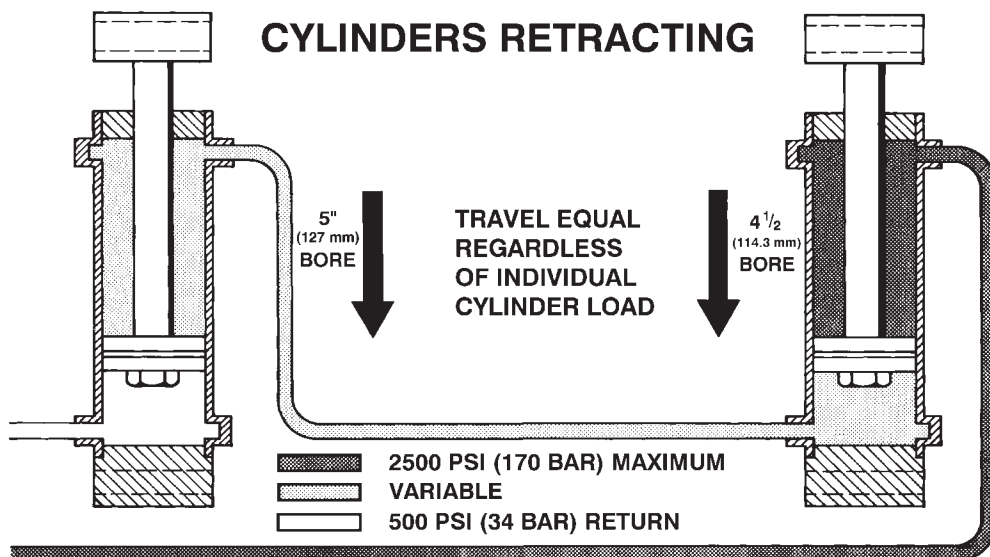
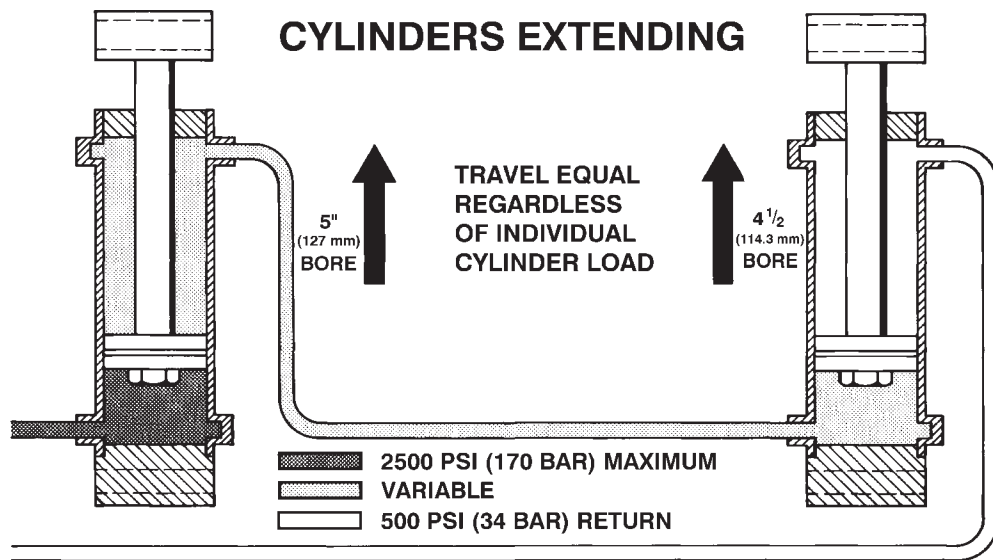
IMPORTANT!

A new cart will have both wheel spindles installed in-board as shown in Fig. 1. DO NOT OPERATE THE CART WITH THE SPINDLES IN THE SHIPPING POSITION.

Remove bolt and nut (Fig, 1-A and B) that holds spindle to the frame. Slide spindle out until second hole (Fig. 1-C) in spindle lines up with the hole in the frame and replace bolt and nut. Repeat on opposite spindle. Reinstall wheels and cart is ready to operate.

INSTRUCTIONS FOR INSTALLING AND REPHASING LIFT CYLINDERS IN THE FIELD

1. Mount base of lift cylinders on cart frame leaving the rod end free. Support the rod end of the cylinder with a short length of rope or chain in such a way as to allow the rods to extend without touching or moving any part of the dump box.
2. Connect all hoses, lines, fittings and valves.
3. Now that the system is properly plumbed, connect it to the hydraulic power source and make sure there is an adequate supply of hydraulic fluid in the reservoir. Start power unit engine.
4. Move control valve to "down" position and hold it for two or more minutes. Then move control to the "up" position and watch the cylinder rods extend. If the cylinders are fully charged, the rods will reach the end of their strokes at the same time. If they do not, continue to hold the control in the "up" position until both cylinders are fully extended. Now move the control valve to the "down" position and retract both cylinders. Repeat this sequence until both cylinders extend and retract together, reaching the end of their strokes at the same time.
5. Cylinder rods may now be pinned to the elevator frame and normal operation may be resumed.



MAINTENANCE

DAILY: **IMPORTANT** - At the start of each work day, hold the DUMP 1 switch in the DOWN position for at least 60 seconds. Then switch to the UP position and, after the box is all the way up, hold the switch UP for at least 60 seconds (this phasing applies only to the lift cylinders, not the tilt cylinders). The dump cart is now ready for operation.

During normal operation hold the switch open for at least 5 seconds at the end of each lift cylinder stroke (both lift cylinders fully extended or retracted). This will ensure proper phasing of these cylinders during continuous operation.

Do not lower box, loaded or empty, with power unit engine shut off. Box must be lowered ONLY with hydraulic pressure to protect against air being drawn into the system.

Lubricate pivot pins and slide tubes. Check all pivot points for freedom of movement and that all pivot pin retaining bolts or cotter pins are secure.

WEEKLY: Lubricate slide channels and rollers. Lubricate hitch swivel. Maintain tire pressure at recommended levels. Check torque on wheel lug nuts (250 - 330 ft. lbs./340 - 450 Nm). Check torque on dump box pivot pins (200 ft. lbs./270 Nm). Check torque of all mounting hardware as required.

ANNUALLY: Clean and repack wheel bearings.



DANGER! KEEP HANDS AND OTHER BODY PARTS OUT OF DANGER AREAS. NEVER GET IN BETWEEN THE BOX AND THE FRAME WHEN THE BOX IS IN THE RAISED POSITION. NEVER RAISE THE BOX NEAR OVER-HEAD ELECTRICAL POWER LINES.



NOTES

ORDERING REPAIR PARTS

All BYRON Dump Chief Series 1500 dump carts are built with top quality agricultural grade components. We recommend that repair/replacement parts for the BYRON dump carts be obtained from one of the BYRON HARVESTER dealer locations shown below. Parts ordered within the continental United States will be shipped via a suitable parcel service if less than 150 lbs. and by common carrier if heavier. Faster service can be provided on request. Arrangements for Canadian and overseas shipment will be made with the customer at the time of order.

BYRON EQUIPMENT CO.
7275 Batavia-Byron Road
Byron, NY 14422-0100

Phone: (716) 548-2665
Fax: (716) 548-2599
E Mail: byron @ iinc.com

BYRON EQUIPMENT CO.
N901 Highway 26 North
Watertown, WI 53098-4316

Phone: (920) 262-8620
Fax: (920) 262-8630

BYRON EQUIPMENT CO.
Great Lakes Office
16582 County Road 40
Goshen, IN 46526

Phone: (219) 642-4313
Fax: (219) 642-4866

BYRON EQUIPMENT CO.
Iowa Office
23645 Diagonal Road
Grundy Center, IA 50638

Phone: (319) 824-5241
Fax: (319) 824-5242

BYRON EQUIPMENT CO.
Washington Office
310 Tippet Lane
Pasco, WA 99301

Phone: (509) 544-0362
Fax: (509) 544-0473

BYRON EQUIPMENT CO.
Oregon Office
16517 N.E. Arney Road
Woodburn, OR 97071-9401

Phone: (503) 981-5860
Fax: (503) 981-4120

LIMITED WARRANTY

Byron Equipment Co. warrants its new machines to be free from defects in material and workmanship, under normal use and service, for a period of one (1) year from the date of delivery to the original purchaser, or five hundred (500) hours of operation, whichever occurs first.

Upon satisfactory claim, we will, within a reasonable time, at our option replace or repair defective parts free of charge. Charges for transportation, customs duties or taxes where applicable, installation, correcting defects or making additions will not be allowed, nor will we accept products returned for credit unless the return or correction is authorized by us in writing.

Warranty claims will not be honored if in the Company's opinion such claim was caused by improper use or adjustment of the machine.

THE REMEDY FOR ANY BREACH OF WARRANTY AND THE ONLY REMEDY FOR THE COMPANY'S LIABILITY OF ANY KIND, INCLUDING LIABILITY FOR NEGLIGENCE, WITH RESPECT TO ANY MACHINE, SHALL BE LIMIT TO THE REPAIR OR REPLACEMENT OF ANY DEFECTIVE PARTS AS STATED ABOVE, AND SHALL IN NO EVENT INCLUDE ANY INCIDENTAL OR CONSEQUENTIAL DAMAGES.

THIS WARRANTY IS IN LIEU OF ANY OTHER WARRANTY, EITHER EXPRESSED OR IMPLIED.

WARRANTY PROCEDURE

1. Call or write your nearest BYRON HARVESTER dealer and request the necessary replacement for the defective parts. BYRON will ship the requested parts and bill the customer at current list price. A copy of the BYRON warranty statement and a "RETURN AUTHORIZATION" tag (shown below) will be included with the replacement parts. The billing invoice attached to the shipment will be stamped with the following notice:

PLEASE RETURN THE PARTS IN QUESTION FOR WARRANTY CONSIDERATION ALONG WITH THE ENCLOSED "RETURN AUTHORIZATION" TAG COMPLETED. THANK YOU

	RETURN AUTHORIZATION No. _ _ _ _ _
	<input type="checkbox"/> WARRANTY REQUEST <input type="checkbox"/> OTHER (WRITE COMMENTS ON BACK)
	INVOICE No. _____ DATE _____
	MAKE _____ MODEL _____
	SERIAL No. _____ PART No. _____
	ACRES _____ HOURS _____
	CUSTOMER/ COMPANY NAME _____
	BYRON EQUIPMENT CO. 7275 BATAVIA BYRON RD. BYRON, NEW YORK 14422

2. Upon receipt of the parts and return authorization tag a credit will be issued if the part is found to be covered by warranty. Only the Service Manager is authorized to determine if parts and or labor will be covered under warranty. No other BYRON employee or agent is authorized to issue or even imply warranty to the customer.
3. Credit will be issued to the customer when the Service Manager authorizes it. Remember, as stated in the written warranty, it is the customer's responsibility for any transportation or shipping costs.

RECORD YOUR BYRON DUMP CART MODEL AND SERIAL NUMBERS IN THE SPACE PROVIDED BELOW. YOUR DEALER NEEDS THESE NUMBERS ALONG WITH PART NUMBER AND PART DESCRIPTION IN ORDER TO GIVE YOU FAST, EFFICIENT SERVICE WHEN YOU NEED PARTS.

MODEL NUMBER

SERIAL NUMBER

REPAIR PARTS SECTION

CONTENTS OF REPAIR PARTS SECTION

TANK & RELATED PARTS	2, 3
ELEVATOR & RELATED PARTS	4, 5
FRAME & WHEELS	6, 7
TONGUE & RELATED PARTS	8, 9
WEIGHT SCALE PARTS	10, 11
FLARED EXTENSIONS	12, 13
POUR LIP & BOX EXTENSIONS	14, 15
HYDRAULIC SYSTEM	16, 17
FRONT LIFT CYLINDER	18
REAR LIFT CYLINDER	19
TILT CYLINDER	20
NUMERICAL PARTS INDEX	

A NOTE ON USING THESE PARTS LISTS

For the dump cart running gear, right or left hand parts are determined as though you were standing behind the cart facing in the direction of travel. Right or left hand parts for the dump box are determined as though you were standing in the dump box facing the pouring lip. The abbreviation "A.R." in the "USED" column means "AS REQUIRED" - the item is used to service a major assembled component or it is used in numbers which may vary between individual machines usually to obtain a particular adjustment or dimension at assembly. When, in the course of routine repair disassembly a number of shims, flatwashers, etc. are removed, always reassemble the same quantity.

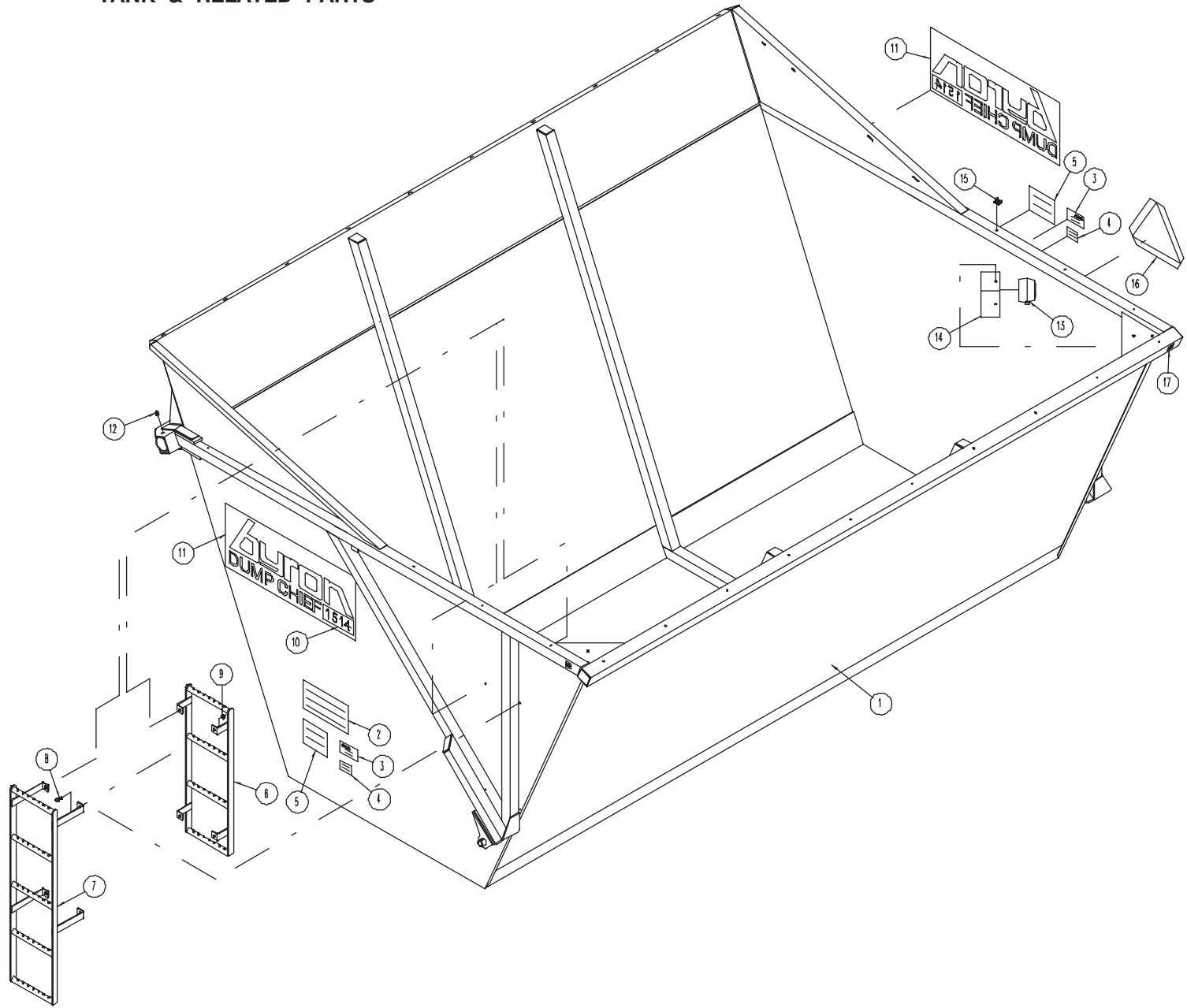
If you have a BYRON part and/or part number and want to know where it is used on your machine refer to the Numerical Parts index in the back of this manual. Find the page where that part is used, then look for the part number on that page. Often a part will be used in more than one location on your machine and since most BYRON HARVESTER parts manuals have the Numerical Parts index, you can determine parts interchangeability between your BYRON HARVESTER machines and avoid overstocking many common parts.

HOW CAN WE IMPROVE THIS MANUAL FOR YOU?

This parts & operator's manual was compiled by the BYRON EQUIPMENT CO. Technical Publications Department. In our continuing effort to provide our customers with the most useful information possible, we invite your comments on this manual to the following address:

Byron Equipment Co.
P.O. Box 100
Byron, N.Y. 14422-0100
Attn: Tech. Publications Dept.

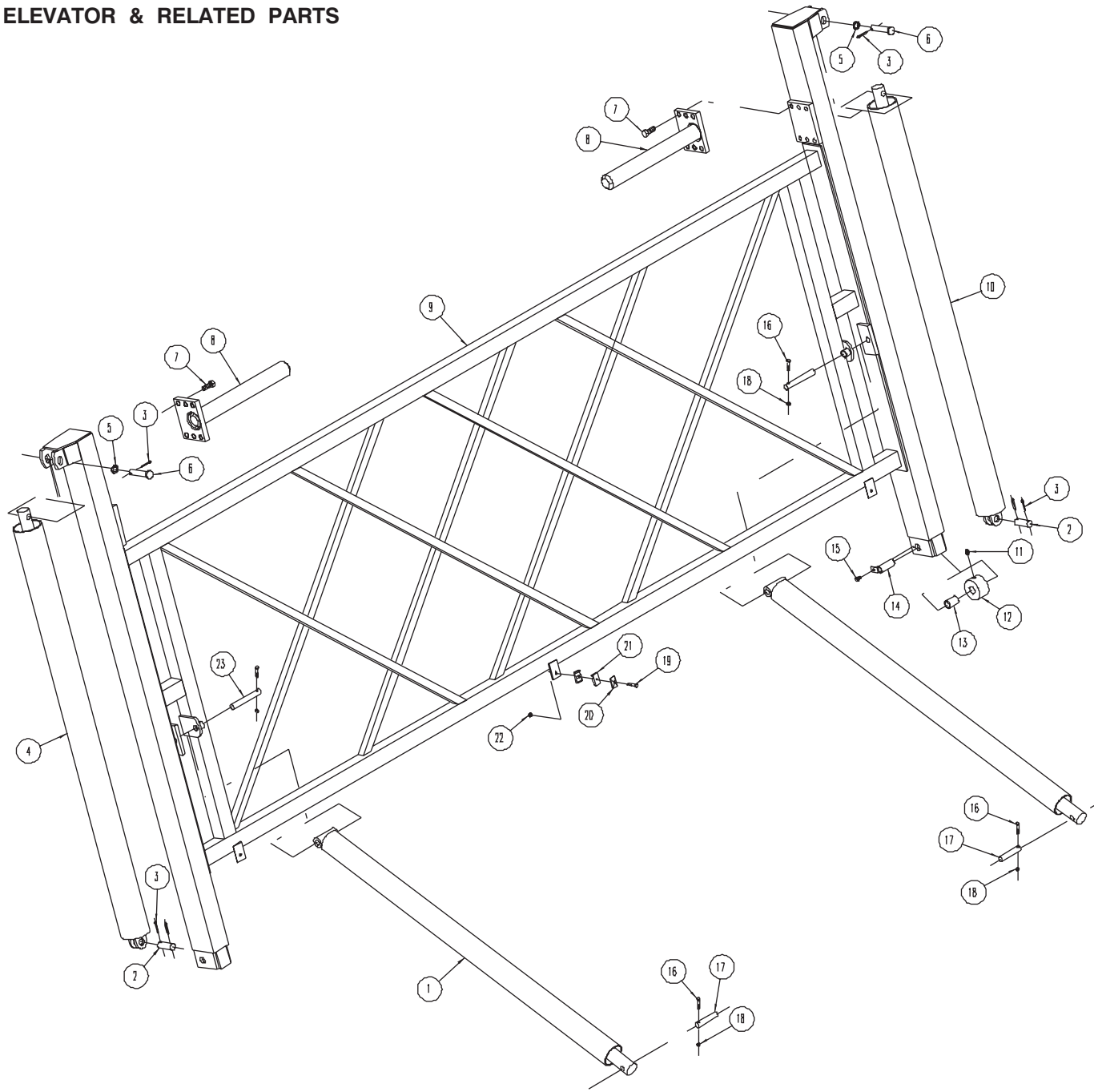
TANK & RELATED PARTS



TANK & RELATED PARTS

KEY	P/N	DESCRIPTION	USED
1	36119	Tank, 1514 Industrial	1
2	90096	Decal, Operating Instructions, Dump Cart	1
3	90215	Decal, address	2
4	90213	Decal, Byron Dump Chief, patent	2
5	90452	Decal, DANGER Keep clear.	2
6	38055	Ladder, inside	1
7	38054	Ladder, outside	1
8	93054	HHCS, 3/8 - 16 x 1-1/4, gr5, plated	4
9	93523	Nut, 3/8 - 16, whizlock	4
10	90092	Decal, 1514 model	2
11	90063	Decal, Byron Dump Chief	2
12	93820	Zerk, 1/4" straight drive	4
-	60879	Light kit (not shown)	A.R.
13	70001	Light, sealed beam lamp (included in light kit #60879)	2
14	32757	Light mount (included in light kit #60879)	2
15	93877	Clip, loom 1/2 dia., steel, plastic coat	18
16	90080	Decal, SMV	1
17	90225	Decal, "GREASE" arrow with grease gun	15

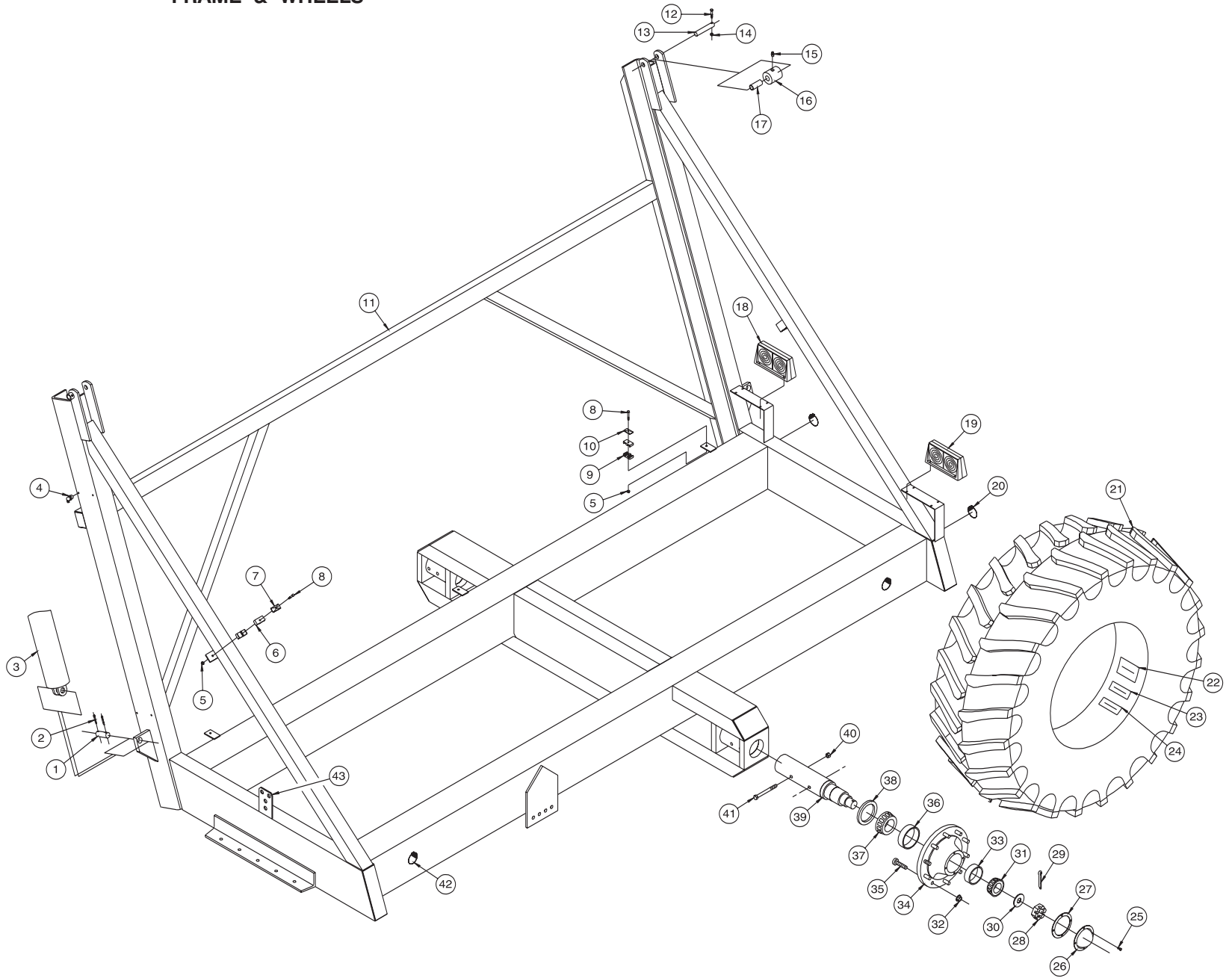
ELEVATOR & RELATED PARTS



ELEVATOR & RELATED PARTS

KEY	P/N	DESCRIPTION	USED
1	41799	Cylinder, 4 x 69	2
2	93800	Pin, headless, 1-1/4 x 3-1/2, plated, 2 (11/32) holes	2
3	93697	Pin, cotter, 5/16 x 2	6
4	41803	Cylinder, 5 x 74-1/2	1
5	93987	Bush, machinery, 1 x 14 ga	2
6	93796	Pin, clevis, 1 x 4-5/8	2
7	93130	HHCS, 3/4 - 10 x 2, gr5, plated	12
8	35640	Pivot pin, 3"	2
9	36118	Elevator, 1514 Industrial	1
10	41801	Cylinder, 4-1/2 x 74-1/2	1
11	93802	Zerk, 1/4 - 28, st. x 45/64, plated	2
12	58006	Bottom roller	2
13	58010	Bushing, bronze 1-1/4 I.D.	2
14	58011	Pin, bottom roller	2
15	94166	HHWZ, 3/8 - 16 x 3/4	2
16	93057	HHCS, 3/8 - 16 x 2, gr5	4
17	93792	Pin, headless, 1 x 4-5/8, 13/32 hole, plated	2
18	93518	Nut, 3/8 - 16, stover lock, plated	4
19	93033	HHCS, 5/16 - 18 x 2-1/4, gr5, plated	3
20	32060	Top plate, 5/8 tube clamp	3
21	32059	Clamp, 5/8 tube (per pair)	3
22	93522	Nut, 5/16 - 18, whizlock, plated	3
23	93793	Pin, headless, 1 x 7-1/8, 13/32 hole, plated	2

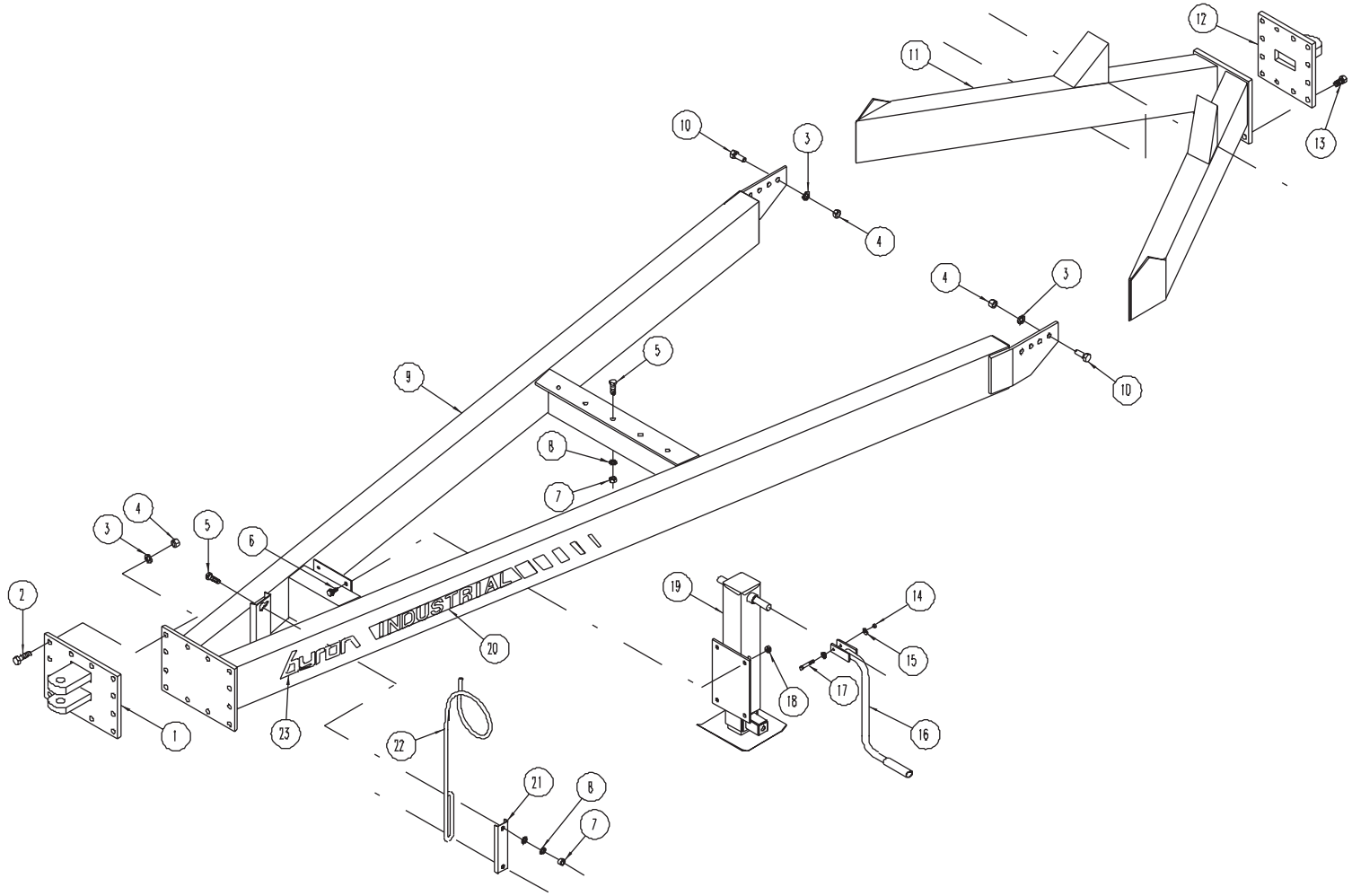
FRAME & WHEELS



FRAME & WHEELS

KEY	P/N	DESCRIPTION	USED
1	93800	Pin, headless, 1-1/4 x 3-1/2, plated, 2 (11/32) holes	2
2	93697	Pin, cotter, 5/16 x 2	6
3	41803	Cylinder, 5 x 74-1/2	1
4	93824	Zerk, 5/16 x 65° drive	8
5	93522	Nut, 5/16 - 18, whizlock, plated	4
6	32095	Clamp, 7/8 tube (per pair)	1
7	32096	Top plate, 7/8 tube clamp	1
8	93033	HHCS, 5/16 - 18 x 2-1/4, gr5, plated	4
9	32059	Clamp, 5/8 tube (per pair)	3
10	32060	Top plate, 5/8 tube clamp	3
11	36117	Frame, 1514 Industrial	1
12	93057	HHCS, 3/8 - 16 x 2, gr5, plated	2
13	93791	Pin, headless, 13/32 hole, plated	2
14	93518	Nut, 3/8 - 16, stover lock, 2-way, plated	2
15	93802	Zerk, 1/4 - 28	2
16	58005	Top roller	2
17	58009	Bushing, bronze, 1" I.D.	2
-	60879	Light kit (not shown)	A.R.
18	70386	Taillight, RH (included in light kit #60879)	1
19	70387	Taillight, LH (included in light kit #60879)	1
20	51754	Reflector, red	2
21	52523	Tire assembly, std rim 21 x 32, each assembly consists of:	2
	51335	Tire, 24.5 x 32 R1, 12 ply	1
	52429	Tube, inner 24.5 x 32	1
	52525	Rim, 21 x 32, 10 hole std	1
22	90224	Decal, wheel torque	2
23	90264	Decal, tire fluid	1
24	90288	Decal, ballast	1
25	93027	HHCS, 5/16 - 18 x 3/4, gr5	16
26	58033	Dust cap	2
27	52059	Gasket, 58015 hub	2
28	93574	2 - 12 slotted hex nut	2
29	93700	Pin, cotter, 5/16 x 3	2
30	93650	Flat washer, 2" I.D.	2
31	58030	Bearing, outer cone	2
32	93533	Nut, 3/4 - 16, flanged	20
33	58027	Bearing, outer cup	2
34	58015	Hub assembly, complete - includes bearing cups and wheel studs	2
35	93415	Wheel stud	20
36	58018	Bearing, inner cup	2
37	58021	Bearing, inner cone	2
38	58024	Seal, inner	2
39	53378	Spindle, 4-1/2 x 23-5/8	2
40	93514	Nut, 5/8 - 11, top lock, one-way, plated	2
41	94350	HHCS, 5/8 - 11 x 6-1/2, gr5, plated	2
42	51755	Reflector, amber	4
43	35672	Bracket, hose bulkhead (weld-on)	A.R.

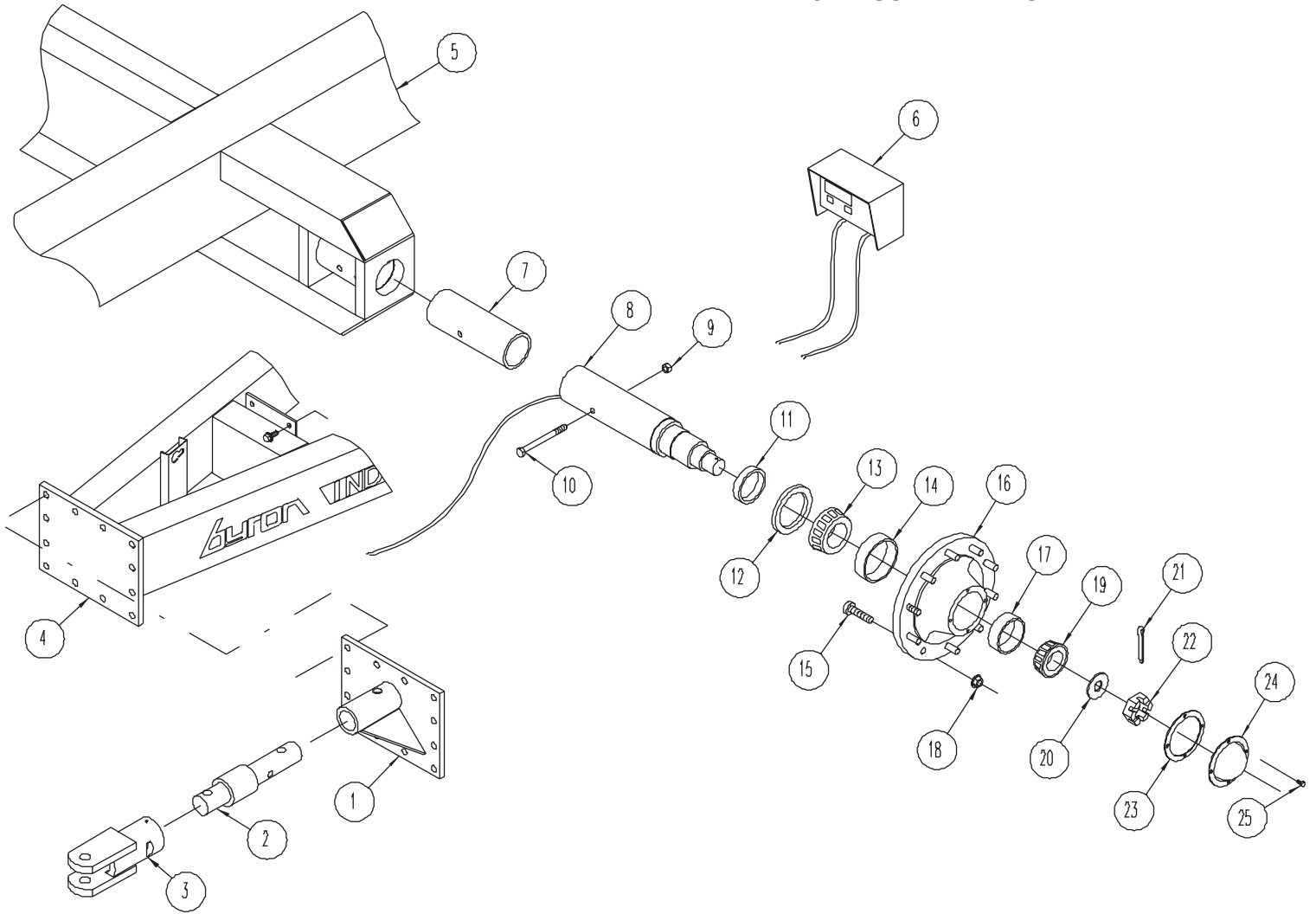
TONGUE & RELATED PARTS



TONGUE & RELATED PARTS

KEY	P/N	DESCRIPTION	USED
1	36121	Hitch, clevis	1
2	93140	HHCS, 3/4 - 10 x 2-1/2, gr5, plated	12
3	93583	Washer, 3/4, split lock, plated	20
4	93458	Nut, 3/4 - 10, hex, UNC, plated	20
5	93106	HHCS, 5/8 - 11 x 2, gr5, plated	7
6	94191	HHWZ, 1/2 x 1-1/4, serrated, gr5, plated	4
7	93457	Nut, 5/8 - 11, hex, plated	7
8	93582	Washer, 5/8, split lock, plated	9
9	36122	Pole, 1514 Industrial	1
10	93130	HHCS, 3/4 - 10 x 2, gr5, plated	8
11	60795	Kit, drawbar [optional: includes items (12) & (13)]	1
12	35706	Drawbar, clevis	1
13	93128	HHCS, 3/4 - 10 x 1-1/2, gr5, plated	12
14	93537	Nut, 3/8 - 16, nylon lock, plated	1
15	94179	Washer, 3/8, flat, narrow, plated	2
16	52820	Crank, jack, for drop leg center mount	1
17	93059	HHCS, 3/8 - 16 x 2-1/2, gr5, plated	1
18	93525	Nut, 1/2 - 13, whizlock, serrated flange, plated	1
19	35315	Jack, 10,000 lbs.	1
20	90518	Decal, Industrial	2
21	33213	Clamp, hose bracket	1
22	32742	Rod, hose bracket	1
23	90266	Decal, Byron logo, 5 x 17.5, orange & buff	2

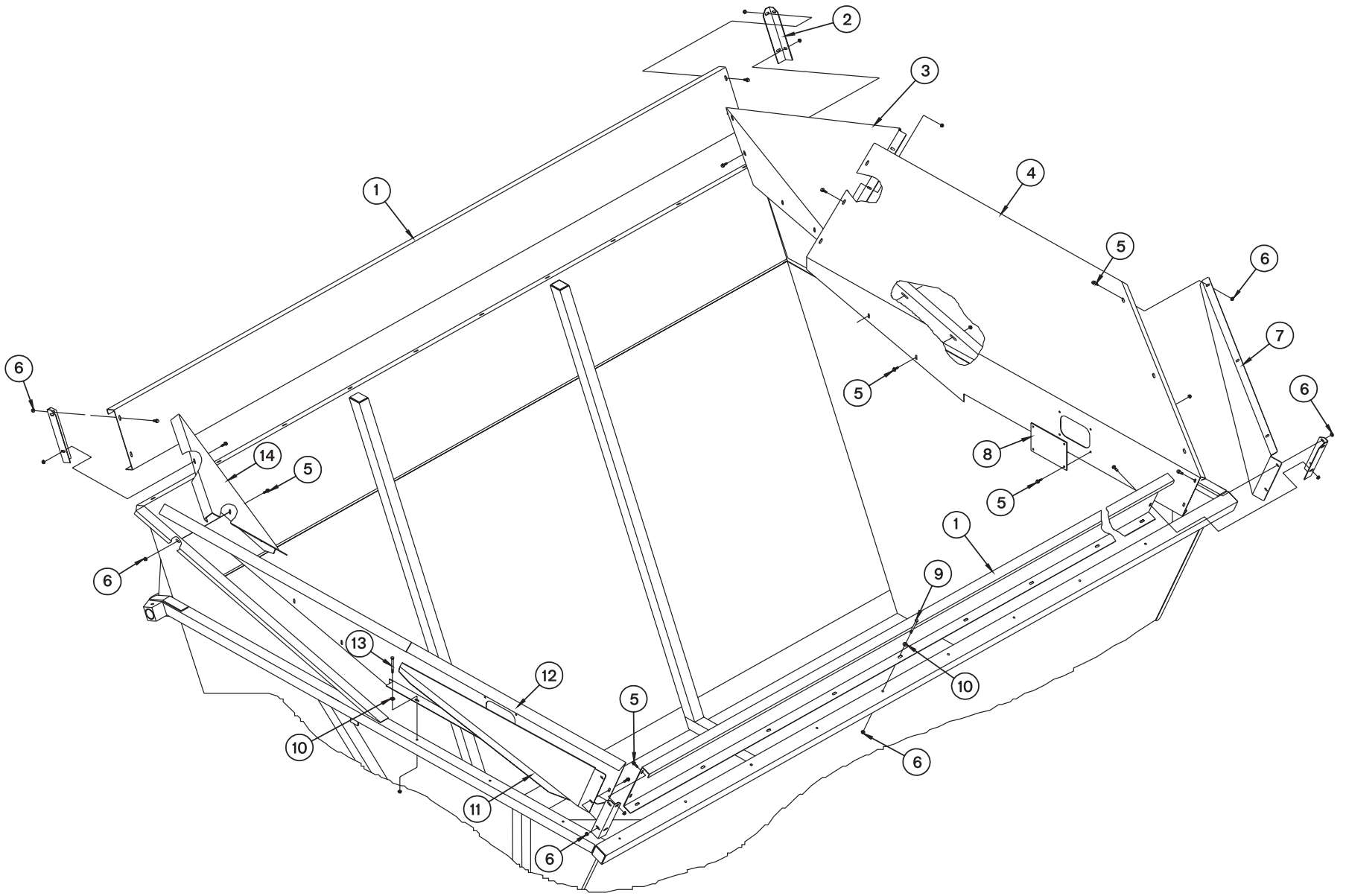
WEIGHT SCALE PARTS



WEIGHT SCALE PARTS

KEY	P/N	DESCRIPTION	USED
1	36293	Hitch base, load cell mount	1
2	70278	Load cell, cart hitch	1
3	32672	Scale tongue	1
4	36122	Part of pole (see pole fig.)	1
5	36117	Part of frame (see frame fig.)	1
6	70276	Cart weight scale indicator	1
7	11674	Bushing, spindle holder	2
8	53354	Spindle, weight scale	1
9	93514	Nut, 5/8 - 11, top lock, one-way, plated	2
10	94350	HHCS, 5/8 - 11 x 6-1/2, gr5, plated	2
11	52068	Bushing, seal	2
12	58024	Seal, inner	2
13	58021	Bearing, inner cone	2
14	58018	Bearing, inner cup	2
15	93415	Wheel stud	20
16	58015	Hub, complete	2
17	58027	Bearing, outer cup	2
18	93553	Nut, 3/4 - 16, flanged	2
19	58030	Bearing, outer cone	2
20	93650	Flat washer, 2" I.D.	2
21	93700	Pin, cotter, 5/16 x 3	2
22	93574	2 - 12 slotted hex nut	2
23	52059	Gasket, 58015 hub	2
24	58033	Dust cap	2
25	93027	HHCS, 5/16 - 18 x 3/4, gr5	16

FLARED EXTENSIONS

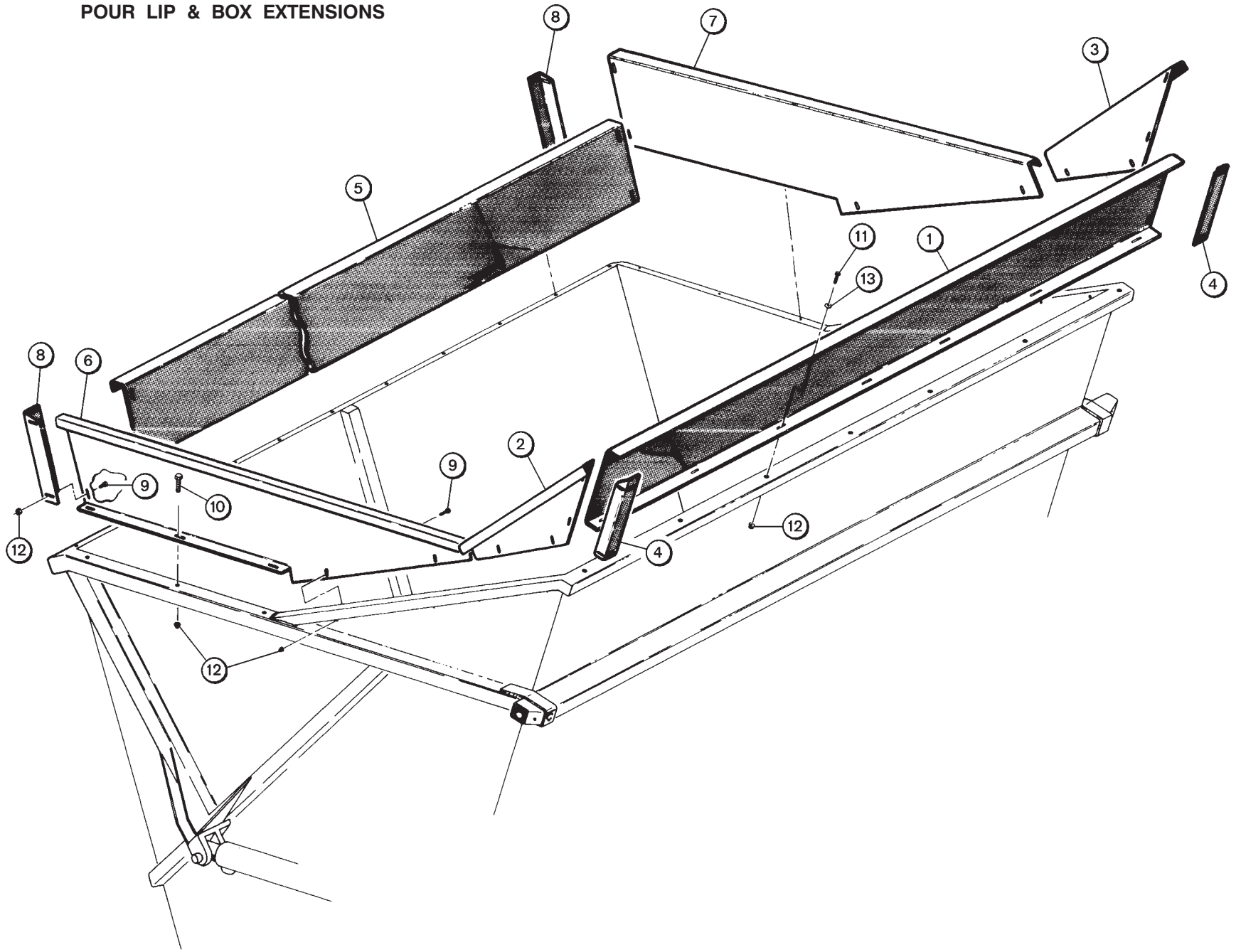


FLARED EXTENSIONS

KEY	P/N	DESCRIPTION	USED
1	28022	Side extension, 14 ft.	2
2	28027	Angle, corner	4
3	22203	Gusset, R.H. *	1
4	22200	End extension, R.H. *	1
5	93384	Hex head capscrew, 5/16"-18 x 1" serrated flange, grade 5	54
6	93522	Locknut, 5/16"-18 hex serrated flange	70
7	32888	End support, R.H. *	1
8	22729	Window, end extension	2
9	93040	Hex head capscrew, 5/16"-18 x 4" grade 5	10
10	93602	Flatwasher, 5/16"	16
11	22205	End support, L.H. *	1
12	22199	End extension, L.H. *	1
13	93038	Hex head capscrew, 5/16"-18 x 3-1/2" grade 5	6
14	22202	Gusset, L.H. *	1

*R.H. and L.H. parts are determined as though you were standing in the dump box facing the lip.

POUR LIP & BOX EXTENSIONS

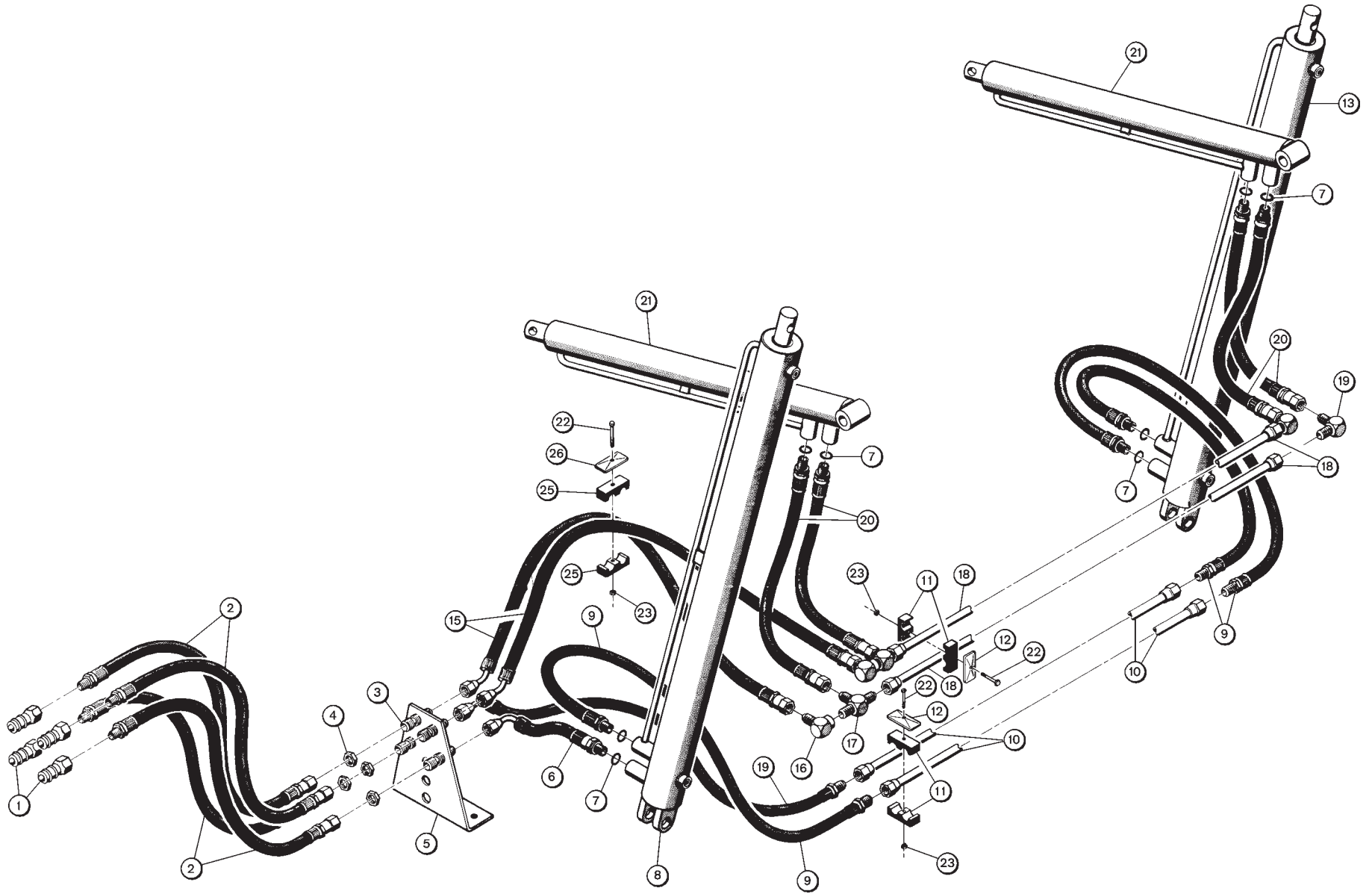


POUR LIP & BOX EXTENSIONS

KEY	P/N	DESCRIPTION	USED
-	60157	Kit, pour lip extension, 14 ft. (Kit includes items 1-4 and all hardware to install)	A.R.
1	28022	Extension, pour lip, 14 ft.	1
2	28026	Extension, pour lip R.H. side*	1
3	28025	Extension, pour lip L.H. side*	1
4	28027	Angle, corner	2
-	60158	Kit, sides and rear extension, 1514 cart (Kit includes items 5 - 8 and all hardware to install)	A.R.
5	28022	Extension, box rear, 14 ft.	1
6	28066	Extension, box R.H. side*	1
7	28065	Extension, box L.H. side*	1
8	28027	Angle, corner	2
9	93384	Hex head capscrew, 5/16"-18 x 1" serrated flange, grade 5	34
10	93038	Hex head capscrew, 5/16"-18 x 3 1/2"	6
11	93040	Hex head capscrew, 5/16"-18 x 4"	10
12	93522	Locknut, 5/16"-18 hex serrated flange	50
13	93602	Flatwasher, 5/16"	16

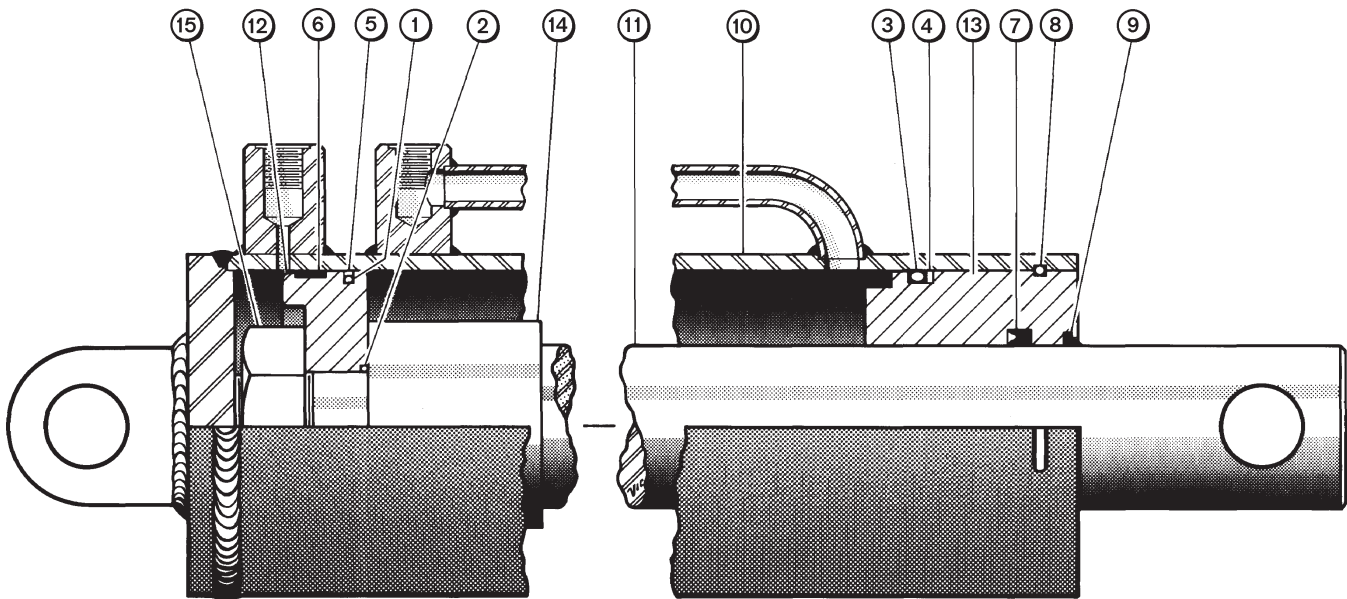
* R.H. and L.H. parts are determined as though you were standing in the dump box facing the lip.

HYDRAULIC SYSTEM



HYDRAULIC SYSTEM

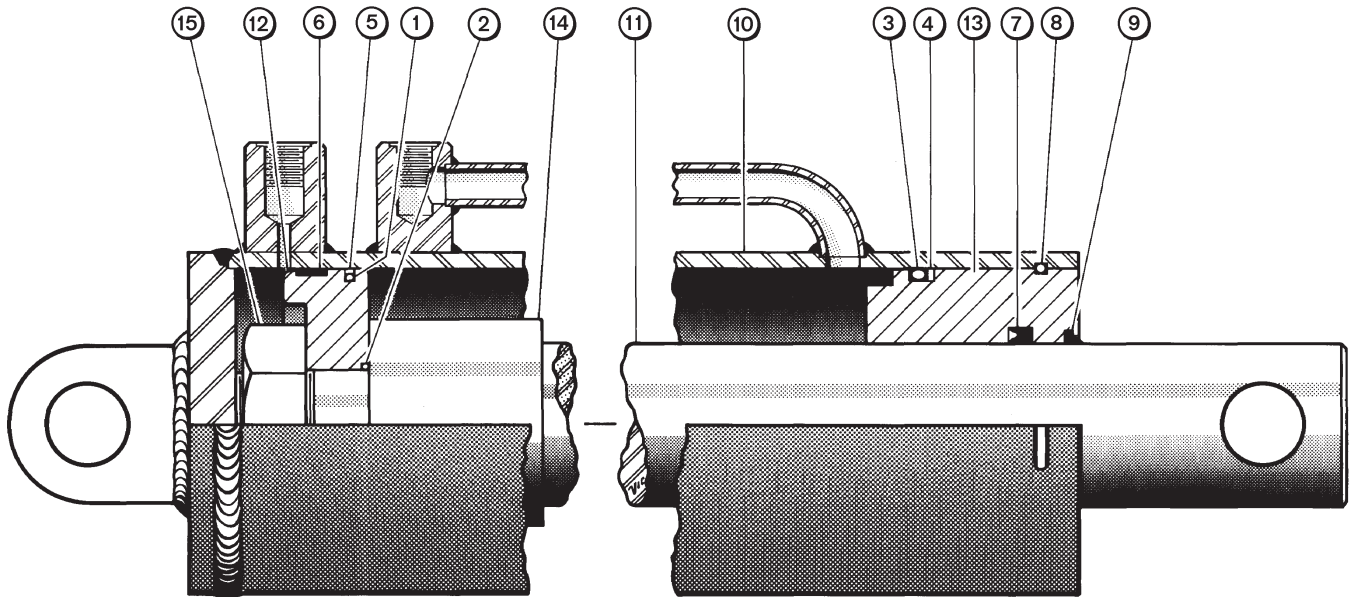
KEY	P/N	DESCRIPTION	USED
1	40070	Quick coupler, male half, 1/2" NPT female	4
2	43210	Hose assembly, 1/2" NPT straight male to -10 JIC straight female swivel, 162" long	4
3	45139	Bulkhead union, -10 JIC (includes jam nut)	4
4	45980	Jam nut, -10	A.R.
5	-----	Bracket, hose bulkhead (welded to main frame)	-
6	43137	Hose assembly, -10 JIC 90° female swivel to -8 SAE "O" ring straight male swivel, 40" long (includes "O" ring)	1
7	45878	"O" ring, -8	A.R.
8	41803	Front lift cylinder assembly, 5" x 74 1/2" (see separate illustration for internal parts)	1
9	48069	Hose assembly, -8 SAE "O" ring straight male swivel to -10 JIC straight male swivel, 32" long (includes "O" ring)	3
10	48052	Tube assembly, 5/8" dia. x approx. 168" long	2
11	32059	Clamp block, 5/8" clamp diameter (sold as a pair)	6
12	32060	Clamp plate, 5/8" clamp block	6
13	41801	Rear lift cylinder assembly, 4 1/2" x 74 1/2" (see separate illustration for internal parts)	1
14	42873	Hose assembly, -10 JIC straight male to -10 JIC 90° female swivel, 44" long	1
15	43211	Hose assembly, -10 JIC straight female swivel to -10 JIC 90° female swivel, 102" long	2
16	45938	90° adapter elbow, -10 JIC male to 1/2" NPT female	2
17	45592	Adapter run tee, -10 JIC to 1/2" NPT	2
18	48054	Tube assembly, 5/8" dia. x approx. 174" long	2
19	45105	90° male elbow, -10 JIC	2
20	48075	Hose assembly, -8 SAE "O" ring straight male to -10 JIC straight female swivel, 49" long (includes "O" ring)	4
21	41799	Tilt cylinder assembly, 4" x 69" (see separate illustration for internal parts)	2
22	93033	Hex head capscrew, 5/16"-18 x 2 1/4" grade 5	7
23	93522	Locknut, 5/16"-18 hex serrated flange	7
24	-----	<i>(Not assigned)</i>	7
25	32095	Clamp block, 7/8" clamp diameter (sold as a pair)	1
26	32096	Clamp plate, 7/8" clamp block	1



TP-315

FRONT LIFT CYLINDER

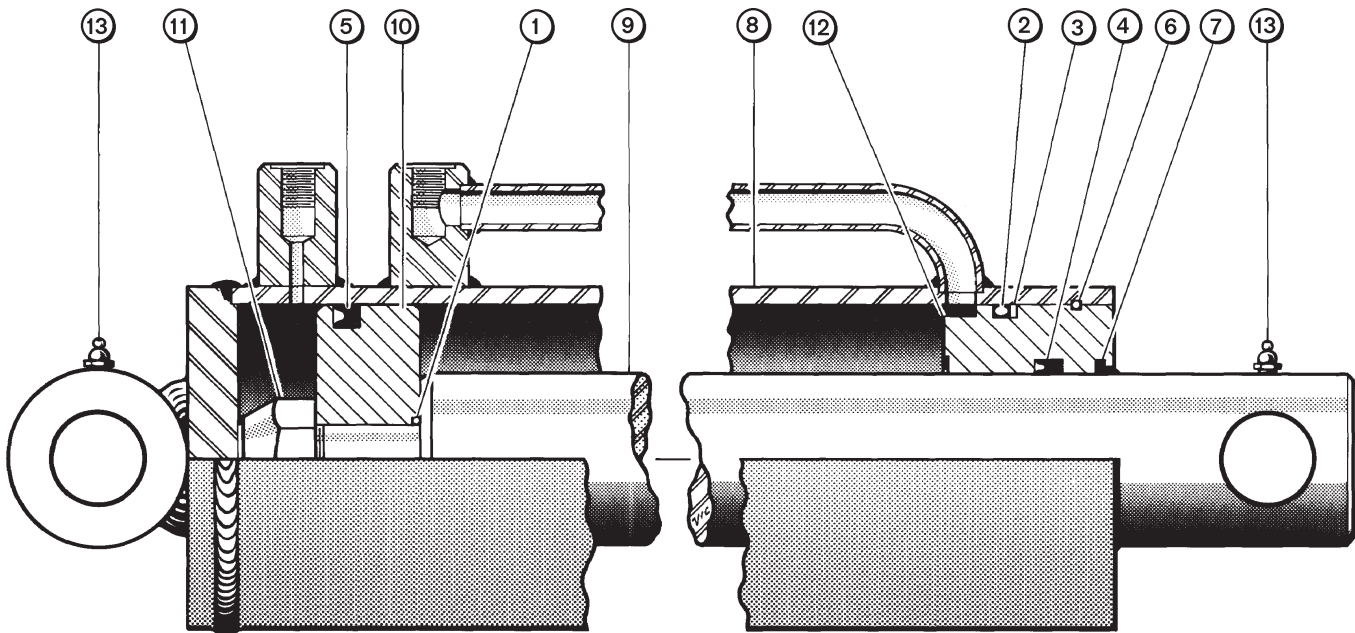
KEY	P/N	DESCRIPTION	USED
A	41803	Hydraulic cylinder, 5" bore x 74-1/2" stroke x 2-3/16" rod diameter, #8 SAE, "O" ring ports [includes items (1) through (15)]	1
B	48106	Seal kit, [includes items (1) through (10)]	1
1		"O" ring, piston outer	1
2		"O" ring, piston inner	1
3		"O" ring	1
4		Back-up washer	1
5		Seal assembly	1
6		Bearing ring	1
7		"U"-cup	1
8		Retaining ring	1
9		Wiper	1
10		Cylinder barrel assembly (not sold separately)	1
11	48108	Rod, piston	1
12	48104	Piston	1
13	48105	Gland	1
14	48101	Spacer	1
15	48097	Nut, 1-1/4 - 12, locknut	1



TP-315

REAR LIFT CYLINDER

KEY	P/N	DESCRIPTION	USED
A	41801	Hydraulic cylinder, 4-1/2" bore x 74-1/2" stroke x 2-3/16" rod diameter, #8 SAE, [includes items (1) through (15)]	1
B	48095	Seal kit, [includes items (1) through (10)]	1
1		"O" ring, piston outer	1
2		"O" ring, piston inner	1
3		"O" ring	1
4		Back-up washer	1
5		Seal assembly	1
6		Bearing ring	1
7		U-cup	1
8		Retaining ring	1
9		Wiper	1
10		Cylinder barrel assembly (not sold separately)	1
11	48108	Rod, piston	1
12	48098	Piston	1
13	48099	Gland	1
14	48101	Spacer	1
15	48097	Nut, 1-1/4 - 12, locknut	1



TP-314

TILT CYLINDER

KEY	P/N	DESCRIPTION	USED
A	41799	Hydraulic cylinder, 4" bore x 69" stroke x 2-1/2" rod diameter, #8 SAE, "O" ring ports [includes items (1) - (15)]	1
B	48008	Seal kit, [includes items (1) through (8)]	1
1		"O" ring	1
2		"O" ring	1
3		Back-up washer	1
4		"U"-cup	1
5		"U"-cup	1
6		Retaining ring	1
7		Wiper	1
8		Cylinder barrel assembly (not sold separately)	1
9	48012	Rod, piston	1
10	48013	Piston	1
11	48014	Nut, 1-- 14, locknut	1
12	48015	Gland	1
13	93809	Grease fitting, 1/8 NPT straight x short, plated	1