



Dump Chief - Series 1300 & 1500 Parts & Operator's Manual

Includes operating, adjustment, lubrication, maintenance, repair parts and safety instructions for Byron dump carts with serial numbers C96001 and higher or 3571012 and higher.

P/N 90626 Rev. A Sept. 1996

TABLE OF CONTENTS

NUMERICAL PARTS INDEX	1
INTRODUCTION	A
SAFETY PRECAUTIONS	B
INSTRUCTIONS AND SAFETY WARNING SIGNS	C
INSTRUCTIONS FOR INSTALLING AND REPHASING LIFT CYLINDERS IN THE FIELD	D
TOWING INSTRUCTIONS	E
MAINTENANCE	F
ORDERING REPAIR PARTS	G
LIMITED WARRANTY	G
WARRANTY PROCEDURE	H
REPAIR PARTS SECTION	1
MAIN FRAME, RUNNING GEAR & RELATED PARTS	2
MAIN FRAME, RUNNING GEAR & RELATED PARTS	3
MAIN FRAME, RUNNING GEAR & RELATED PARTS	4
MAIN FRAME, RUNNING GEAR & RELATED PARTS	5
ELEVATOR FRAME, DUMP BOX & RELATED PARTS	6
ELEVATOR FRAME, DUMP BOX & RELATED PARTS	7
HYDRAULIC SYSTEM	8
HYDRAULIC SYSTEM	9
HYDRAULIC SYSTEM	10
HYDRAULIC SYSTEM	11
POWERED WHEELS HYDRAULICS, S11 WHEEL MOTORS	12
POWERED WHEELS HYDRAULICS, S11 WHEEL MOTORS	13
1300 TILT CYLINDER	14
1300 FRONT LIFT CYLINDER	15
1300 REAR LIFT CYLINDER	16
1500 TILT CYLINDER	17
1500 FRONT LIFT CYLINDER	18
1500 REAR LIFT CYLINDER	19
POUR LIP & BOX EXTENSIONS	20
POUR LIP & BOX EXTENSIONS	21
DROP SIDE BOX EXTENSION, 1512 SERIES CART	22
DROP SIDE BOX EXTENSION, 1512 SERIES CART	23
FLARED EXTENSIONS, 1500 SERIES	24
FLARED EXTENSIONS, 1500 SERIES	25
LIGHTS & WIRING	26
S11 WHEEL MOTOR INTERNAL PARTS	27
DUMP CART WEIGHT SCALE KIT	28
DUMP CART WEIGHT SCALE KIT	29
TOWING / WHEEL MOTOR PRESSURIZATION KIT	30

NUMERICAL PARTS INDEX

<i>P/N</i>	<i>Page</i>	<i>P/N</i>	<i>Page</i>	<i>P/N</i>	<i>Page</i>	<i>P/N</i>	<i>Page</i>
18001	3	34455	13	43443	30	53255	5
18002	3	34530	13	43444	30	58005	3
18003	3	35819	9	43445	30	58006	7
18004	3	35824	3	48012	15, 16, 17, 18, 19	58009	3
18005	3	35825	3	48013	15, 16, 17, 18, 19	58010	7
18030	7	35826	3	48014	14, 15, 16 17, 18, 19	58011	7
18031	7	35827	3	48015	17	58015	3, 29
18032	7	35828	3	48026	14	58018	3, 29
18033	7	36121	13	48051	9	58021	3, 29
18043	7	36223	30	48052	9	58024	3, 29
18044	7	38002	3	48053	9	58027	3, 29
18045	7	38003	3	48054	9	58030	3, 29
18046	7	38015	3	48065	11	58033	3, 29
18068	7	38025	3, 29	48069	9	58034	3
18069	7	38044	3	48074	9	58116	5
		38047	3	48075	9	58117	5
22199	25	38054	7	48078	9		
22200	25	38055	7	48079	9	60141	21
22202	25	38058	7	48092	14	60142	21
22203	25	38097	3	48094	14	60146	21
22205	25	38098	3	48095	14, 15, 16, 17, 18, 19	60150	21
22729	25	38156	3	48099	16, 19	60153	21
23109	13	38157	3	48101	18, 19	60154	21
28015	23	38158	3	48105	15, 18	60157	21
28017	23					60158	21
28018	23	40069	11	50268	29	60384	25
28019	23	40070	9, 11	51044	13	60493	26
28020	21	40079	30	51335	5, 13	60494	26
28021	21	41798	3, 9, 11	51605	5		
28022	21, 25	41799	9	51745	3	70001	26
28023	21	41800	9	51746	3	70066	26
28024	21	41801	9, 14, 15, 16, 17, 18, 19, 30	51754	7	70213	30
28025	21	41802	9	51755	7	70226	26
28026	21	41803	9	51790	5	70229	30
28027	21, 25	42099	30	51814	3	70276	29
28065	21	42102	13	51819	5	70278	29
28066	21	42103	13	51822	5, 13	70335	26
		42481	27	51832	5	70787	30
32059	9	42487	27	51945	5		
32060	9	42592	13	52059	29	88510	30
32095	11	42594	13	52064	29	88583	30
32096	11	42596	13	52429	5, 13	88733	30
32104	3	42597	13	52523	5		
32242	26	42599	13	52525	5	90063	7
32243	26	42601	13	52651	13	90080	7
32667	29	42616	13	52652	13	90089	7
32668	29	42617	13	52653	13	90090	7
32669	29	42692	27	52654	13	90091	7
32672	29	42776	27	52684	5	90092	7
32742	3	42873	9	52685	5	90096	7
32743	3	43047	9	53092	3	90097	7
32757	26	43210	9	53093	3	90166	7
32888	25	43211	9	53179	5	90224	5, 13
33213	3	43212	9			90225	7
34445	13	43215	9			90264	5, 13
34447	13	43359	9			90478	13
34448	13						

byron® DUMP CHIEF

Models

1310

1312

1314

1512

1514



INTRODUCTION

The BYRON Dump Chief family of dump carts is designed and built to be used in conjunction with the BYRON 8400, 8420, 9400 or any late model tractor with 2000 PSI (137 bar) hydraulic system capacity. With the wide range of models and options available, the BYRON Dump Chief meets the needs of today's harvesting requirements, providing years of dependable, low maintenance service. We recommend that the operator of this equipment become familiar with all the material in this manual as well as any additional manuals pertaining to the tractor being used so as to optimize the productivity of the equipment and safety of the user.

TABLE OF CONTENTS

SAFETY PRECAUTIONS	D
INSTRUCTIONS AND SAFETY WARNING SIGNS	E
LIFT CYLINDER PHASING INSTRUCTIONS	F
TOWING INSTRUCTIONS	G
MAINTENANCE	H
ORDERING REPAIR PARTS	I
LIMITED WARRANTY	I
WARRANTY PROCEDURE	J
CONTENTS OF REPAIR PARTS SECTION	K



SAFETY PRECAUTIONS



READ AND UNDERSTAND ALL OF THE INSTRUCTIONS IN THIS MANUAL BEFORE ATTEMPTING TO OPERATE THIS MACHINE

- Read Operator's section of this manual thoroughly.
- Keep clear of danger areas. Never place any part of the body between the box and frame while the box is in the raised position.
- Use extreme caution when towing dump cart over uneven ground. Always dump with cart on level ground. Do not dump downhill.
- Do not raise box unless the cart is positioned beside a receiving container in proper unloading position.
- The tire opposite the dumping side should be loaded with a minimum of 140 gallons (530 L) of fluid.
- Keep tire pressure at recommended levels.
- DO NOT TOW CART WITH HYDRAULIC LINES DISCONNECTED FROM POWER UNIT.
- If towing with any vehicle other than a BYRON power unit, see towing instructions in this manual.
- Do not exceed 25 MPH (40 Kph) when towing cart.
- DO NOT LOAD MORE THAN 20,000 POUNDS (9,072 kg) ON A 1500 SERIES CART OR 18,000 POUNDS (8,165 kg) ON A 1300 SERIES CART.
- Always maintain oil level in the power unit oil reservoir. Pumping air into the cart hydraulic system will cause uneven cylinder pressures, which can lead to severe twisting of the dump box and frame.
- When parked, block wheels to prevent cart from rolling.
- Disconnect or disengage all power sources or drives before adjusting, lubricating or repairing this machine.
- When replacing hydraulic hoses or other hydraulic components with other than original equipment, replacement parts must meet or exceed 3500 PSI (240 bar) operating pressure.

FAILURE TO COMPLY WITH THESE INSTRUCTIONS WILL VOID ANY WARRANTY LIABILITY OF THE MANUFACTURER.



**DEVELOP SAFE OPERATING HABITS FOR YOURSELF AND INSIST THAT ANYONE ELSE OPERATING THIS MACHINE DO THE SAME.
REMEMBER...SAFETY IS EVERYONE'S CONCERN!**



INSTRUCTIONS AND SAFETY WARNING SIGNS

The signs shown on this page are placed on the machine to warn of hazards or remind the operator of important procedures to be followed when using this equipment. The warnings are for your personal safety and the safety of those working around you. **OBSERVE THESE SIGNS!** If the decals become worn or illegible, replace them with new decals. See repair parts section of this manual for location and part numbers of these signs.

MUCHO CUIDADO

WARNING

No toman este vehículo fuera del campo con ninguna carga en la langosta.

No conducen o remolcan este vehículo en la velocidad de carretera cuando cargó.

Do not take this vehicle out of the field with any load in the hopper.

Do not drive or tow loaded vehicle at highway speeds.

90470

IMPORTANT OPERATING INSTRUCTIONS BLEEDING AND PURGING	LAS INSTRUCCIONES ACTIVAS IMPORTANTES LA SANGRIA Y PURGANDO
<p>The hydraulic circuit that raises and lowers the dump box must be bled and purged of air each day before operating the dump functions.</p> <p>STEP 1. (Dump carts only) When first connecting hoses from a dump cart to the remote outlets on the power unit, air must be bled from the hoses before attempting to purge cylinders. Loosen "down" hose end at front lift cylinder one turn, and with power unit engine running, place "DUMP 1" switch in the "LOWER" position to bleed air from the hoses. When no more air comes from hose end, re-tighten fitting.</p> <p>STEP 2. Purge dump box lift circuit by placing "DUMP 1" switch in the "LOWER" position for 60 seconds to purge air from circuit.</p> <p>STEP 3. Place "DUMP 1" switch in "RAISE" position and observe lift cylinders to make sure they extend evenly. If cylinders do not extend evenly, repeat step 2. When both cylinders extend evenly, hold switch in "RAISE" position for 60 seconds after box reaches top of its travel.</p> <p>STEP 4. Repeat steps (2) and (3) five times or more.</p> <p>After initial daily purging, during normal operation when dumping box, hold "DUMP 1" switch a minimum of 5 seconds after the cylinders reach the end of their stroke in each direction.</p> <p>IMPORTANT: Failure to follow daily purging instructions can result in severe damage to lift cylinders and dump box elevator frame.</p> <p>Never lower dump box when power unit engine is shut down. Always lower box with hydraulic pressure.</p> <p>ON DUMP CARTS ONLY: Do not exceed 20,000 lbs. (9072 kg.) load on 1500 series, or 18,000 lbs. (8163 kg.) load on 1300 series dump carts.</p> <p>Keep hydraulic reservoir filled to recommended level to avoid chance of air being drawn into the system.</p>	<p>El circuito hidráulico que levanta y rebaja la caja de basurero debe sangrarse y purgarse de aire cada día antes de operar las funciones de basurero.</p> <p>EL PASO 1. (El basurero transporta únicamente) Cuando mangueras conectores primeras desde un carrito de basurero a las salidas remotas sobre la unidad de poder, el aire debe sangrarse desde las mangueras antes de intentar de purgar cilindros. Desata "abajo" fin de manguera en el cilindro anterior de elevación un turno, y con el motor de unidad de poder corriendo, poniendo "BASURERO 1" interruptor en la "MA'S INFERIOR" posición de sangrar aire desde las mangueras. Cuando ningún más aire viene desde el fin de manguera, re-aprieta adaptar.</p> <p>EL PASO 2. El circuito de elevación de caja de basurero de purga por poner "BASURERO 1" interruptor en la "MA'S INFERIOR" posición para 60 segundos para purgar aire desde el circuito.</p> <p>EL PASO 3. El lugar "EL BASURERO 1" el interruptor en "ALZA" ubica y observa cilindros de elevación para asegurar ellos extienden igualmente. Si los cilindros no extienden igualmente, paso de repetición 2. Cuando los ambos cilindros extienden igualmente, retiene interruptor en "ALZA" la posición para 60 segundos después de alcances de caja supera de su viaje.</p> <p>EL PASO 4. La repetición camina (2) y (3) cinco veces o más.</p> <p>Después de inicial diario purgatorio, durante la operación normal cuando la caja de dompeo, retiene "BASURERO 1" cambiar un mínimo de 5 segundos después de los cilindros alcanzar el fin de su golpe en cada dirección.</p> <p>IMPORTANTE: El fracaso para seguir instrucciones purgatorias diarias puede resultar en daño severo para levantar ascensor de caja de basurero y cilindros marco.</p> <p>Nunca rebaja la caja de basurero cuando el motor de unidad de poder se cierra abajo. Siempre rebajar caja con la presión hidráulica.</p> <p>SOBRE EL BASURERO TRANSPORTA UNICO: No exceden 9072 kg. carga sobre 1500 serie, o 8163 kg. carga sobre 1300 carritos de basurero de serie.</p> <p>Guarde depósito hidráulico llenado al nivel recomendado para evitar oportunidad de aire siendo envuelto en el sistema.</p>
DUMP CARTS ONLY - THE TIRE OPPOSITE THE DUMP SIDE SHOULD BE FULLY LOADED WITH LIQUID OR A COUNTER WEIGHT MUST BE INSTALLED. DO NOT RAISE BOX UNLESS MACHINE IS STOPPED BESIDE A RECEIVING TRUCK. USE EXTREME CAUTION WHEN DUMPING ON UNEVEN GROUND. READ OPERATORS MANUAL BEFORE SERVICING MACHINE.	EL BASURERO TRANSPORTA UNICO - EL OPONENTE DE LLANTA EL LADO DE BASURERO DEBERIA TOTALMENTE CARGARSE CON EL LÍQUIDO O UN PESO CONTRARIO DEBE INSTALARSE. NO LEVANTAN CAJA A MENOS QUE LA QUE MAQUINA SE PARE AL LADO DE UN RECIBIDA CAMION. USE EL CUIDADO EXTREMO CUANDO DESCARGANDO SOBRE EL TERRENO CERRIL. LEA MANUAL DE OPERADOR ANTES DE ATENDER MAQUINA.

FOR PROPER OPERATION OF THIS UNIT
1400 LBS. OF BALLAST IS REQUIRED
ON THE SIDE OPPOSITE DUMP

90288

THIS TIRE HAS BEEN FILLED
WITH 140 GALLONS OF A
CALCIUM CHLORIDE SOLUTION

90264

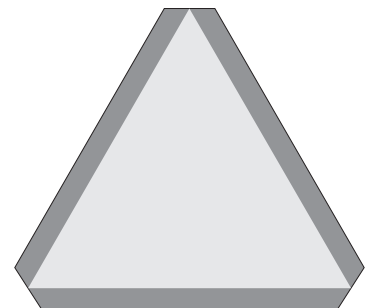
<div style="text-align: center; font-size: 2em; font-weight: bold;"> WARNING </div> <p>Do not tow this attachment with hydraulic lines disconnected from Byron Power Unit.</p> <p>If towing with any vehicle other than a Byron Power Unit, Byron Towing/ Wheel Motor Pressurization Kit must be installed on the attachment.</p> <p>Never connect this attachment to any high pressure hydraulic source other than a Byron Power Unit.</p> <p>Read Operator's Manual supplied with this attachment before towing.</p>	<div style="text-align: center; font-size: 2em; font-weight: bold;"> MUCHO CUIDADO </div> <p>No remolque este equipo con su sistema hidráulico desconectado de la unidad Byron.</p> <p>Si es remolcado con un equipo distinto a una unidad Byron, el equipo de presión motorizado de remolque Byron debe ser instalado en el otro vehículo.</p> <p>Nunca conecte este equipo a un sistema hidráulico de alta presión diferente a la unidad Byron.</p> <p>Consulte el manual de operador que viene con su equipo Byron antes de remolcar.</p> <p style="text-align: right; font-size: 0.8em;">90478</p>
---	---

<div style="text-align: center; font-size: 2em; font-weight: bold;"> PELIGRO </div> <p>El reloj para el poder eléctrico superior raya</p> <p>El contacto puede resultar en la muerte o daño serio por la electrocución</p> <p>Procede cuidadosamente debajo líneas eléctricas superiores y alrededor polos de utilidad</p>		<div style="text-align: center; font-size: 2em; font-weight: bold;"> DANGER </div> <p>Watch for overhead power lines</p> <p>Contact may result in serious injury or death by electrocution</p> <p>Proceed cautiously under overhead electrical lines and around utility poles</p> <p style="text-align: right; font-size: 0.8em;">90452</p>
---	--	--

IMPORTANT

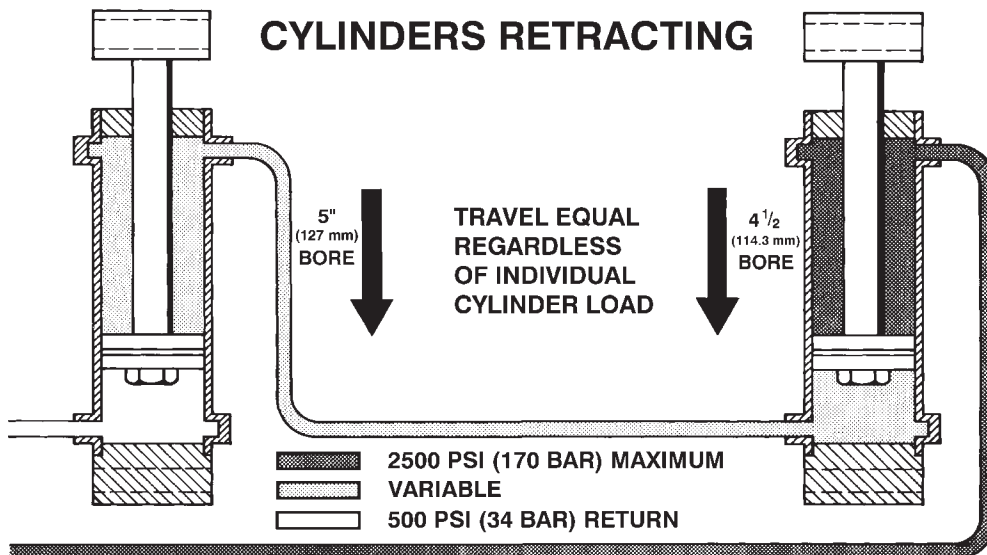
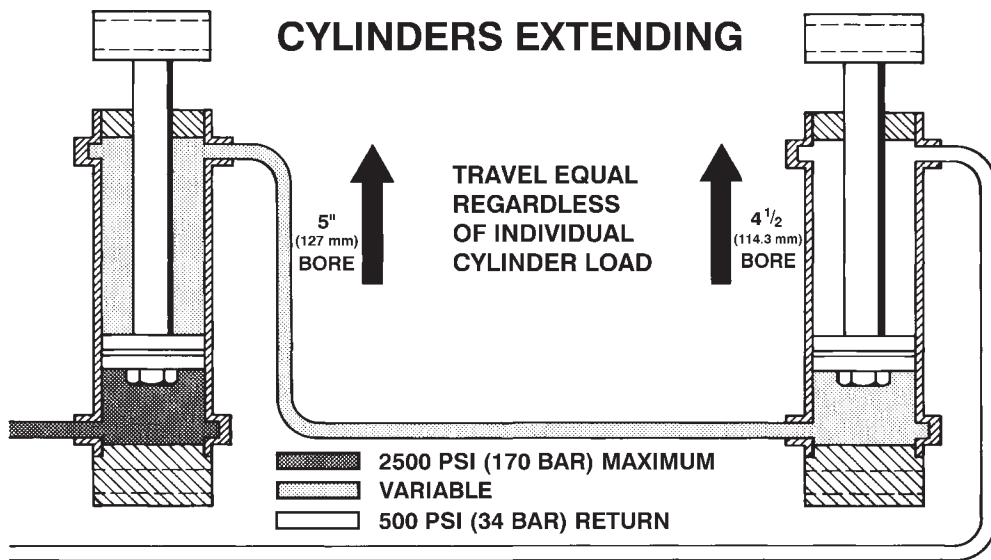
DURING FIRST 12 HOURS OF OPERATION
RETORQUE WHEEL LUG NUTS EVERY 2 HOURS
THIS WHEEL: 250-330 FT. LBS.
CHECK TORQUE PERIODICALLY

90516



INSTRUCTIONS FOR INSTALLING AND REPHASING LIFT CYLINDERS IN THE FIELD

1. Mount base of lift cylinders on cart frame leaving the rod end free. Support the rod end of the cylinder with a short length of rope or chain in such a way as to allow the rods to extend without touching or moving any part of the dump box.
2. Connect all hoses, lines, fittings and valves.
3. Now that the system is properly plumbed, connect it to the hydraulic power source and make sure there is an adequate supply of hydraulic fluid in the reservoir. Start power unit engine.
4. Move control valve to “down” position and hold it for two or more minutes. Then move control to the “up” position and watch the cylinder rods extend. If the cylinders are fully charged, the rods will reach the end of their strokes at the same time. If they do not, continue to hold the control in the “up” position until both cylinders are fully extended. Now move the control valve to the “down” position and retract both cylinders. Repeat this sequence until both cylinders extend and retract together, reaching the end of their strokes at the same time.
5. Cylinder rods may now be pinned to the elevator frame and normal operation may be resumed.



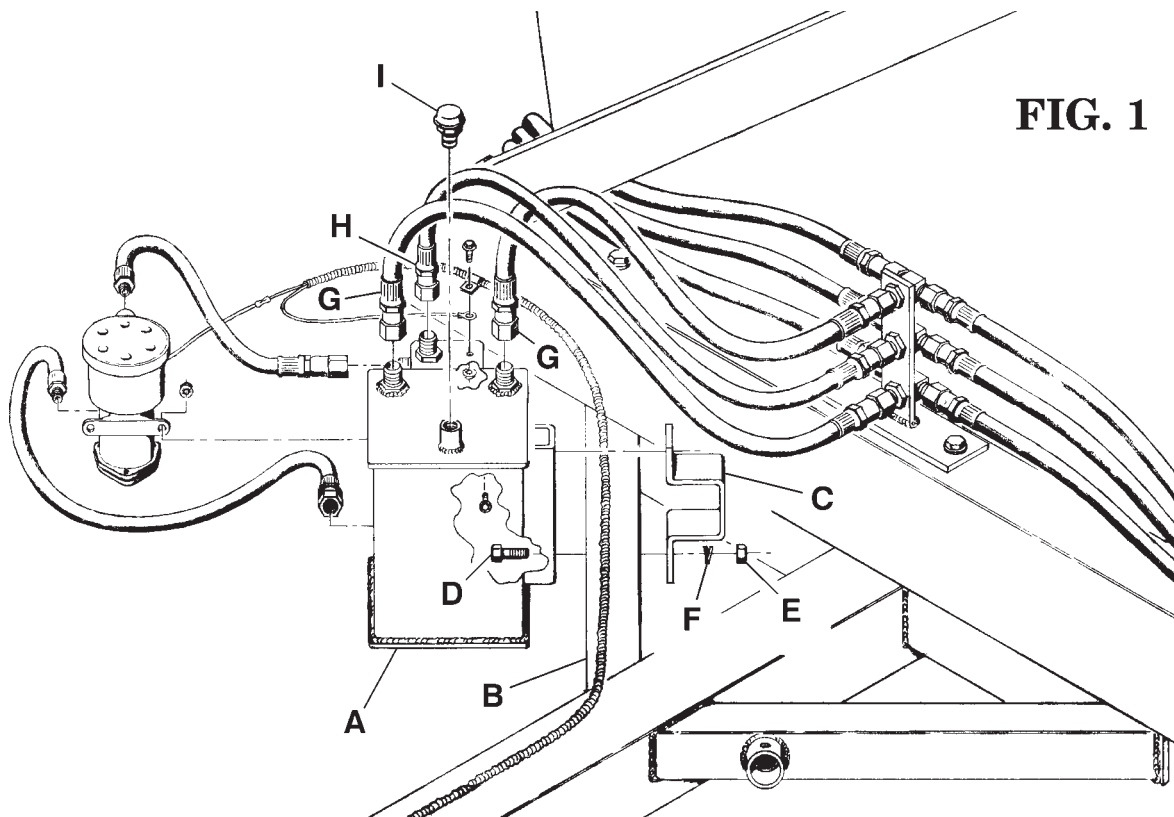
TOWING INSTRUCTIONS

When towing any BYRON dump cart equipped with POCLAIN model S-11 wheel motors, internal damage to the wheel motors may result if the cart is towed without the powered wheel hydraulic hoses connected to either a BYRON power unit or the BYRON Towing/Wheel Motor Pressurization Kit which supplies the wheel motor case with low pressure oil in the 2 - 15 PSI (.14 - 1.02 bar) range. NEVER connect the powered wheel hydraulic hoses to a high pressure hydraulic source on a tractor or other vehicle. High pressure applied to the case side of the wheel motors can cause serious damage.

If the cart is being towed behind a BYRON power unit, it must be coupled to the power unit hydraulics as if you were going to engage the powered wheels on the cart. The wheels do not need to be engaged, however, as the power units' case drain line will supply low pressure oil to the wheel motors.

If the cart is to be towed by any vehicle other than a BYRON power unit, low pressure oil must be supplied to the dump cart wheel motors with the installation of the Towing/Wheel Motor Pressurization Kit, BYRON part number 60870.

Install the kit to the front of the dump cart as shown in FIG. 1 using the following instructions:



- (1) Mount the reservoir (A) to the right front diagonal crossmember (B) using reservoir mount (C) and 5/8" bolts (D), nuts (E) and lockwashers (F).
- (2) Thread ends of the two drive pressure hoses (G) to the two -12 male fittings on top of the reservoir.
- (3) Thread end of case drain hose (H) to the top of the bulkhead fitting.
- (4) Using a funnel, fill the reservoir with a good grade of tractor hydraulic/transmission oil and install breather (I) in the reservoir.
- (5) Plug end of oil pump power cord into cigar lighter on the vehicle which is to tow the dump cart. Check to see that the pump is functioning and that there are no oil leaks.
- (6) The dump cart can now be towed at speeds not to exceed 25 MPH (15 Km/h) without danger of damage to the wheel motors.

NOTE: Whenever the Towing/Wheel Motor Pressurization pump is not being used, be sure to install JIC caps on all three fittings on top of the reservoir.

MAINTENANCE

DAILY: IMPORTANT - At the start of each work day, hold the DUMP 1 switch in the DOWN position for at least 60 seconds. Then switch to the up position and, after the box is all the way up, hold the switch UP for at least 60 seconds (this phasing applies only to the lift cylinders, not the tilt cylinders). The dump cart is now ready for operation.

During normal operation hold the switch open for at least 5 seconds at the end of each lift cylinder stroke (both lift cylinders fully extended or retracted). This will ensure proper phasing of these cylinders during continuous operation.

Do not lower box, loaded or empty, with power unit engine shut off. Box must be lowered ONLY with hydraulic pressure to protect against air being drawn into the system.

Lubricate pivot pins and slide tubes. Check all pivot points for freedom of movement and that all pivot pin retaining bolts or cotter pins are secure.

WEEKLY: Lubricate slide channels and rollers. Lubricate hitch swivel. Maintain tire pressure at recommended levels. Check torque on wheel lug nuts (250 - 330 ft. lbs./340 - 450 Nm). Check torque on dump box pivot pins (200 ft. lbs./270 Nm). Check torque of all mounting hardware as required.

ANNUALLY: Clean and repack wheel bearings.



DANGER! KEEP HANDS AND OTHER BODY PARTS OUT OF DANGER AREAS. NEVER GET IN BETWEEN THE BOX AND THE FRAME WHEN THE BOX IS IN THE RAISED POSITION. NEVER RAISE THE BOX NEAR OVER-HEAD ELECTRICAL POWER LINES.



NOTES

ORDERING REPAIR PARTS

All BYRON Dump Chief Series 1300 and 1500 dump carts are built with top quality agricultural grade components. We recommend that repair/replacement parts for the BYRON dump carts be obtained from one of the BYRON HARVESTER dealer locations shown below. Parts ordered within the continental United States will be shipped via a suitable parcel service if less than 150 lbs. and by common carrier if heavier. Faster service can be provided on request. Arrangements for Canadian and overseas shipment will be made with the customer at the time of order.

BYRON EQUIPMENT CO.
7275 Batavia-Byron Road
Byron, NY 14422-0100

Phone: (716) 548-2665
Fax: (716) 548-2599
E Mail: byron@iinc.com

BYRON EQUIPMENT CO.
N901 Highway 26 North
Watertown, WI 53098-4316

Phone: (920) 262-8620
Fax: (920) 262-8630

BYRON EQUIPMENT CO.
Great Lakes Office
16582 County Road 40
Goshen, IN 46526

Phone: (219) 642-4313
Fax: (219) 642-4866

BYRON EQUIPMENT CO.
Iowa Office
23645 Diagonal Road
Grundy Center, IA 50638

Phone: (319) 824-5241
Fax: (319) 824-5242

BYRON EQUIPMENT CO.
Washington Office
310 Tippet Lane
Pasco, WA 99301

Phone: (509) 544-0362
Fax: (509) 544-0473

BYRON EQUIPMENT CO.
Oregon Office
16517 N.E. Arney Road
Woodburn, OR 97071-9401

Phone: (503) 981-5860
Fax: (503) 981-4120

LIMITED WARRANTY

Byron Equipment Co. warrants its new machines to be free from defects in material and workmanship, under normal use and service, for a period of one (1) year from the date of delivery to the original purchaser, or five hundred (500) hours of operation whichever occurs first.

Upon satisfactory claim, we will, within a reasonable time, at our option replace or repair defective parts free of charge. Charges for transportation, customs duties or taxes where applicable, installation, correcting defects or making additions will not be allowed, nor will we accept products returned for credit unless the return or correction is authorized by us in writing.

Warranty claims will not be honored if in the Company's opinion such claim was caused by improper use or adjustment of the machine.

THE REMEDY FOR ANY BREACH OF WARRANTY AND THE ONLY REMEDY FOR THE COMPANY'S LIABILITY OF ANY KIND, INCLUDING LIABILITY FOR NEGLIGENCE, WITH RESPECT TO ANY MACHINE, SHALL BE LIMIT TO THE REPAIR OR REPLACEMENT OF ANY DEFECTIVE PARTS AS STATED ABOVE, AND SHALL IN NO EVENT INCLUDE ANY INCIDENTAL OR CONSEQUENTIAL DAMAGES.

THIS WARRANTY IS IN LIEU OF ANY OTHER WARRANTY, EITHER EXPRESSED OR IMPLIED.

WARRANTY PROCEDURE

1. Call or write your nearest BYRON HARVESTER dealer and request the necessary replacement for the defective parts. BYRON will ship the requested parts and bill the customer at current list price. A copy of the BYRON warranty statement and a "RETURN AUTHORIZATION" tag (shown below) will be included with the replacement parts. The billing invoice attached to the shipment will be stamped with the following notice:

PLEASE RETURN THE PARTS IN QUESTION FOR WARRANTY CONSIDERATION ALONG WITH THE ENCLOSED "RETURN AUTHORIZATION" TAG COMPLETED. THANK YOU

	RETURN AUTHORIZATION No. _ _ _ _ _
	<input type="checkbox"/> WARRANTY REQUEST <input type="checkbox"/> OTHER (WRITE COMMENTS ON BACK)
	INVOICE No. _____ DATE _____
	MAKE _____ MODEL _____
	SERIAL No. _____ PART No. _____
	ACRES _____ HOURS _____
CUSTOMER/ COMPANY NAME _____	
	BYRON EQUIPMENT CO. 7275 BATAVIA BYRON RD. BYRON, NEW YORK 14422

2. Upon receipt of the parts and return authorization tag a credit will be issued if the part is found to be covered by warranty. Only the Service Manager is authorized to determine if parts and or labor will be covered under warranty. No other BYRON employee or agent is authorized to issue or even imply warranty to the customer.
3. Credit will be issued to the customer when the Service Manager authorizes it. Remember, as stated in the written warranty, it is the customer's responsibility for any transportation or shipping costs.

RECORD YOUR BYRON DUMP CART MODEL AND SERIAL NUMBERS IN THE SPACE PROVIDED BELOW. YOUR DEALER NEEDS THESE NUMBERS ALONG WITH PART NUMBER AND PART DESCRIPTION IN ORDER TO GIVE YOU FAST, EFFICIENT SERVICE WHEN YOU NEED PARTS.

MODEL NUMBER

SERIAL NUMBER

REPAIR PARTS SECTION

CONTENTS OF REPAIR PARTS SECTION

MAIN FRAME, RUNNING GEAR & RELATED PARTS	2 - 5
ELEVATOR FRAME, DUMP BOX & RELATED PARTS	6, 7
HYDRAULIC SYSTEM	8 - 11
POWERED WHEELS HYDRAULICS, S11 WHEEL MOTORS	12, 13
1300 TILT CYLINDER.....	14
1300 FRONT LIFT CYLINDER	15
1300 REAR LIFT CYLINDER	16
1500 TILT CYLINDER	17
1500 FRONT LIFT CYLINDER	18
1500 REAR LIFT CYLINDER	19
POUR LIP & BOX EXTENSIONS	20, 21
DROP SIDE BOX EXTENSION, 1512 SERIES CART	22, 23
FLARED EXTENSIONS, 1500 SERIES	24, 25
LIGHTS & WIRING	26
S11 WHEEL MOTOR INTERNAL PARTS	27
DUMP CART WEIGHT SCALE KIT	28, 29
TOWING / WHEEL MOTOR PRESSURIZATION KIT	30
NUMERICAL PARTS INDEX	

A NOTE ON USING THESE PARTS LISTS

For the dump cart running gear, right or left hand parts are determined as though you were standing behind the cart facing in the direction of travel. Right or left hand parts for the dump box are determined as though you were standing in the dump box facing the pouring lip. The abbreviation "A.R." in the "USED" column means "AS REQUIRED" - the item is used to service a major assembled component or it is used in numbers which may vary between individual machines usually to obtain a particular adjustment or dimension at assembly. When, in the course of routine repair disassembly a number of shims, flatwashers, etc. are removed, always reassemble the same quantity.

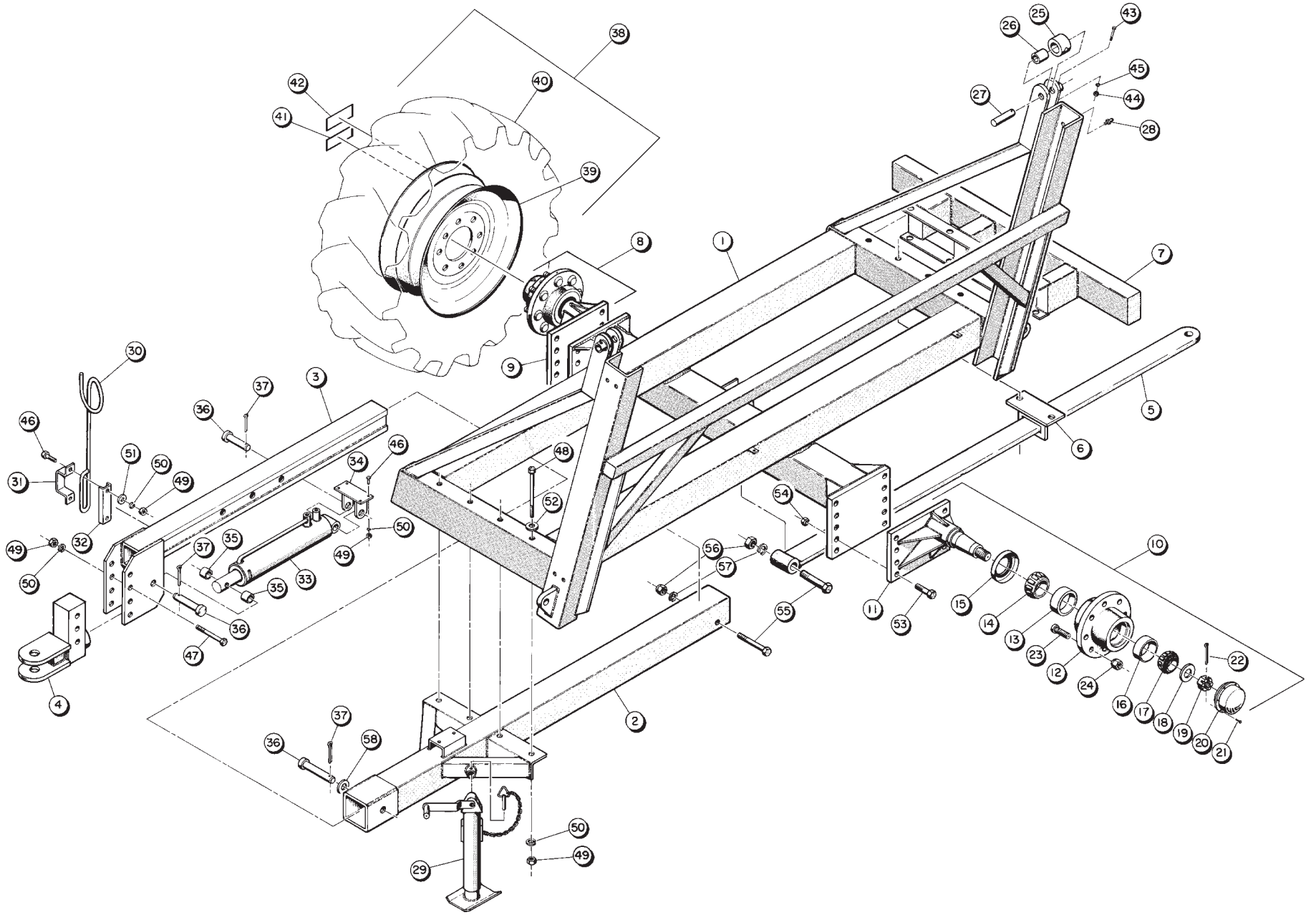
If you have a BYRON part and/or part number and want to know where it is used on your machine refer to the Numerical Parts index in the back of this manual. Find the page where that part is used, then look for the part number on that page. Often a part will be used in more than one location on your machine and since most BYRON HARVESTER parts manuals have the Numerical Parts index, you can determine parts interchangeability between your BYRON HARVESTER machines and avoid overstocking many common parts.

HOW CAN WE IMPROVE THIS MANUAL FOR YOU?

This parts & operator's manual was compiled by the BYRON EQUIPMENT CO. Technical Publications Department. In our continuing effort to provide our customers with the most useful information possible, we invite your comments on this manual to the following address:

Byron Equipment Co.
P.O. Box 100
Byron, N.Y. 14422-0100
Attn: Tech. Publications Dept.

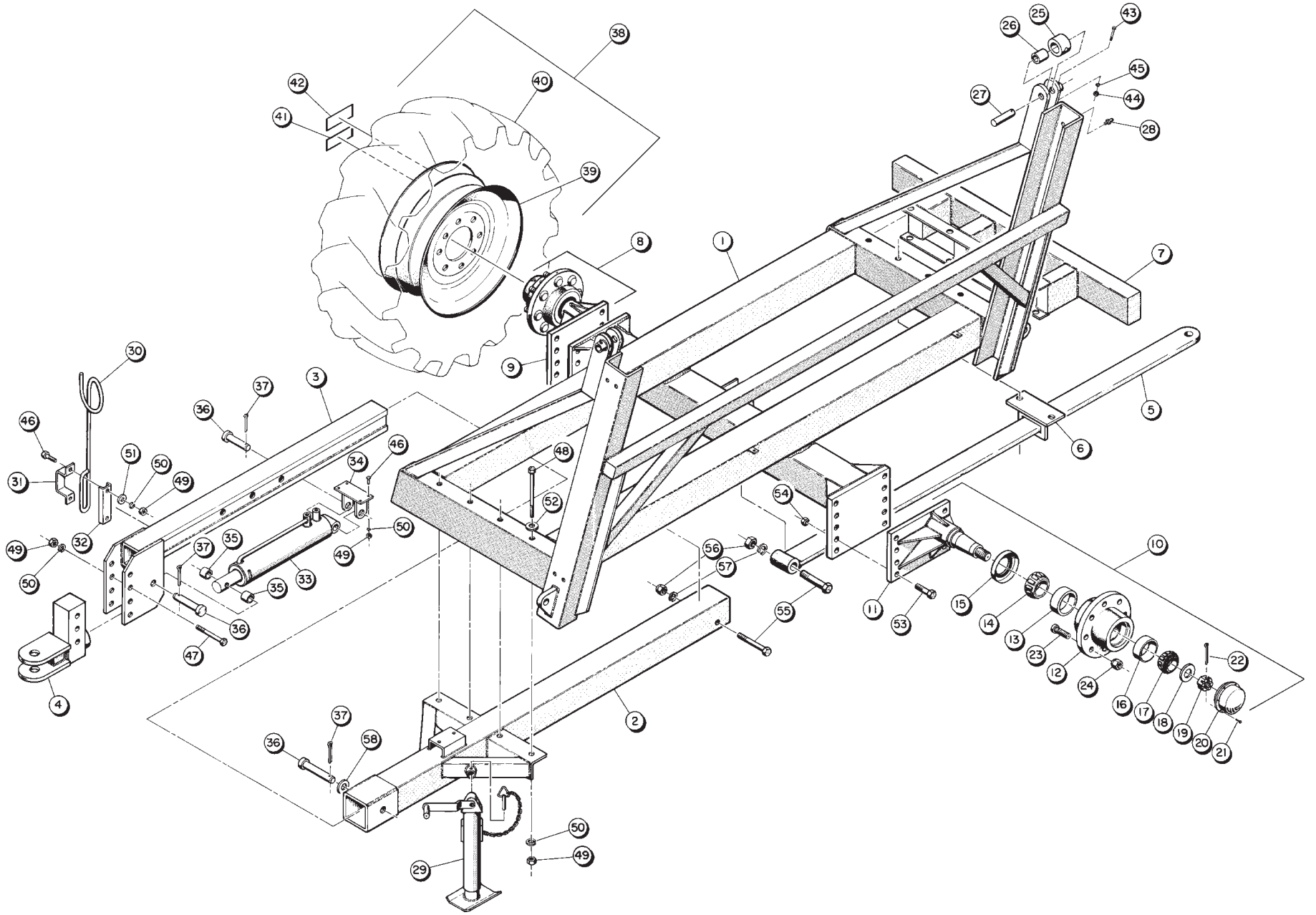
MAIN FRAME, RUNNING GEAR & RELATED PARTS



MAIN FRAME, RUNNING GEAR & RELATED PARTS

KEY	P/N	DESCRIPTION	USED
1	18001	Main frame assembly, 1310	1
1	18002	Main frame assembly, 1312	1
1	18005	Main frame assembly, 1314	1
1	18003	Main frame assembly, 1512	1
1	18004	Main frame assembly, 1514	1
2	35824	Outer pole assembly, 1310	1
2	35825	Outer pole assembly, 1312	1
2	35826	Outer pole assembly, 1314	1
2	35827	Outer pole assembly, 1512	1
2	35828	Outer pole assembly, 1514	1
3	38025	Inner pole assembly, all carts	1
4	38015	Hitch assembly, swiveling clevis, all carts	1
5	38158	Drawbar assembly, 1310*	1
5	38097	Drawbar assembly, 1312, 1512*	1
5	38098	Drawbar assembly, 1314, 1514*	1
6	32104	Bracket, drawbar center, all carts*	1
7	38157	Bumper assembly, all 1300 series carts*	1
7	38156	Bumper assembly, all 1500 series carts*	1
8	51745	Spindle and hub assembly complete, R.H., all carts (includes items 9 and 12 thru 24)	A.R.
9	38002	Spindle assembly, R.H.	1
9	53092	Spindle assembly, R.H. (for 30.5 x 32 used tires only)	A.R.
10	51746	Spindle and hub assembly complete, L.H., all carts (includes items 11 thru 23)	A.R.
11	38003	Spindle assembly, L.H.	1
11	53093	Spindle assembly, L.H. (for 30.5 x 32 used tires only)	A.R.
12	58015	Hub assembly, all carts (includes bearing cups and wheel studs)	2
13	58018	Bearing cup, inner	2
14	58021	Bearing cone, inner	2
15	58024	Seal, inner	2
16	58027	Bearing cup, outer	2
17	58030	Bearing cone, outer	2
18	93650	Washer, wheel bearing	2
19	93574	Nut, wheel bearing	2
20	58033	Dust cap	2
21	93027	Hex head capscrew, 5/16"-18 x 3/4" grade 5	4
22	93700	Cotter pin, 5/16" dia. x 3" long	2
23	93415	Wheel stud, 3/4"-16	A.R.
24	93553	Nut, wheel, 3/4"-16 hex flanged	20
25	58005	Top roller assembly (includes bushing and grease fitting)	2
26	58009	Bushing, top roller	A.R.
27	93791	Pin, top roller, 1" dia. x 5 5/8" long	2
28	93802	Grease fitting, 1/4"-28 straight x short	A.R.
29	58034	Jack assembly, all carts	1
30	32742	Bracket, hose support	1
31	32743	Clamp, hose support bracket	1
32	33213	Channel, hose support clamp	1
33	41798	Hydraulic cylinder, tongue extension* (Refer to Hydraulic System illustration on page 8)	1
34	38044	Bracket, tongue extension cylinder mount*	1
35	38047	Spacer, cylinder rod end*	2
36	93790	Clevis pin, 1" dia. x 5 3/4" long	1-2
37	93697	Cotter pin, 5/16" dia. x 2" long	1-2
38	51814	Tire and wheel assembly complete, 20.8 x 38 10 ply tire and tube mounted on 18 x 38 10 hole rim	2

MAIN FRAME, RUNNING GEAR & RELATED PARTS

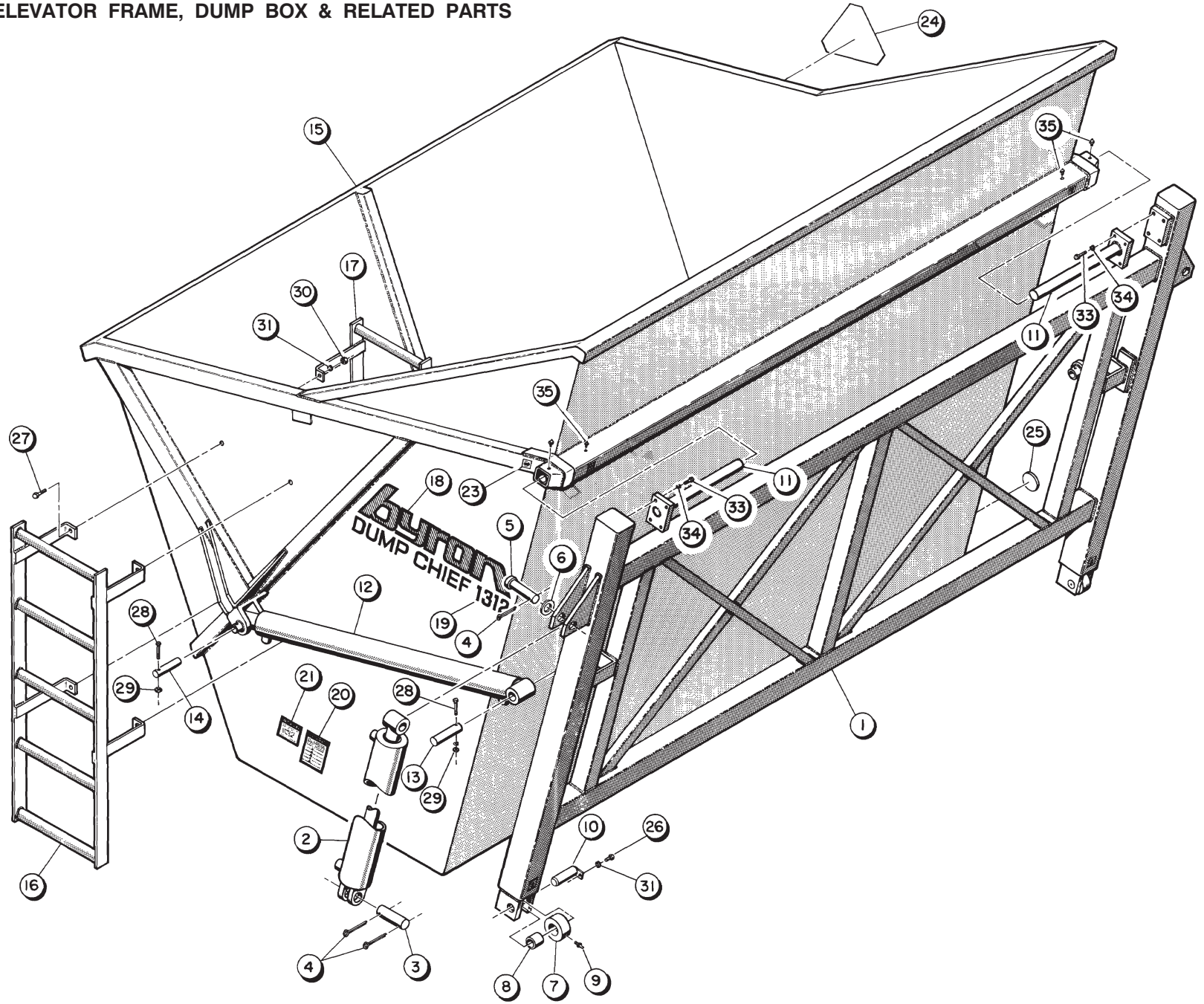


MAIN FRAME, RUNNING GEAR & RELATED PARTS
(continued)

KEY	P/N	DESCRIPTION	USED
39	58117	Wheel, 18 x 38 10-hole (for standard hub)	A.R.
-	51832	Inner tube, 20.8 x 38 (not shown)	A.R.
40	51822	Tire, 20.8 x 38 10 ply	A.R.
38	51790	Used tire and wheel assembly complete, 20.8 x 38 10 ply used tire and new tube mounted on new 18 x 38 10 hole rim	2
39	58117	Wheel, 18 x 38 10-hole (for standard hub)	A.R.
-	51832	Inner tube, 20.8 x 38 (not shown)	A.R.
40	51819	Tire, 20.8 x 38 10 ply - used	A.R.
38	52523	Tire and wheel assembly complete, 24.5 x 32 12 ply tire and tube mounted on 21 x 32 10 hole rim	2
39	52525	Wheel, 21 x 32 10 hole (for standard hub)	A.R.
-	52429	Inner tube, 24.5 x 32 (not shown)	A.R.
40	51335	Tire, 24.5 x 32 12 ply	A.R.
38	53179	Tire and wheel assembly complete, 18.4 x 38 10 ply tire and tube mounted on 16 x 38 10 hole rim	2
39	58116	Wheel, 16 x 38 10 hole (for standard hub)	A.R.
40	53255	Tire, 18.4 x 38 10 ply with inner tube	A.R.
38	52685	Used tire and wheel assembly complete, 30.5 x 32 tire and tube mounted on 27 x 32 10 hole rim	2
39	52684	Wheel, 27 x 32 10 hole (for standard hub)	A.R.
-	51605	Inner tube, 30.5 x 32 (not shown)	A.R.
40	51945	Tire, 30.5 x 32 - used	A.R.
41	90264	Decal, tire fluid, used on tire opposite dump side	1
42	90224	Decal, wheel lug torque instructions	2
43	93057	Hex head capscrew, 3/8-16" x 2" grade 5	2
44	93518	Locknut, 3/8"-16 hex stover type, 2-way	2
45	93824	Grease fitting, 3/8" x 65° drive-in type	8
46	93106	Hex head capscrew, 5/8"-11 x 2" grade 5	2-6
47	93116	Hex head capscrew, 5/8"-11 x 5 1/2" grade 5	3
48	93123	Hex head capscrew, 5/8"-11 x 10" grade 5	4-8
49	93457	Nut, 5/8"-11 hex	9-14
50	93582	Lockwasher, 5/8" split spring	9-14
51	93607	Flatwasher, 5/8"	2
52	93988	Flatwasher, 11/16" I.D. x 2 1/2" O.D. x 3/8" thick	4-8
53	93140	Hex head capscrew, 3/4"-10 x 2 1/2" grade 8	16
54	93458	Nut, 3/4"-10 hex	16
55	93442	Hex head capscrew, 1"- 8 x 6 1/2" grade 5	1-2
56	93460	Nut, 1"- 8 hex	1-2
57	93585	Lockwasher, 1" split spring	1-2
58	93987	Machinery washer, 1" shaft dia. x 14 ga.	1

*Optional parts not installed on all carts

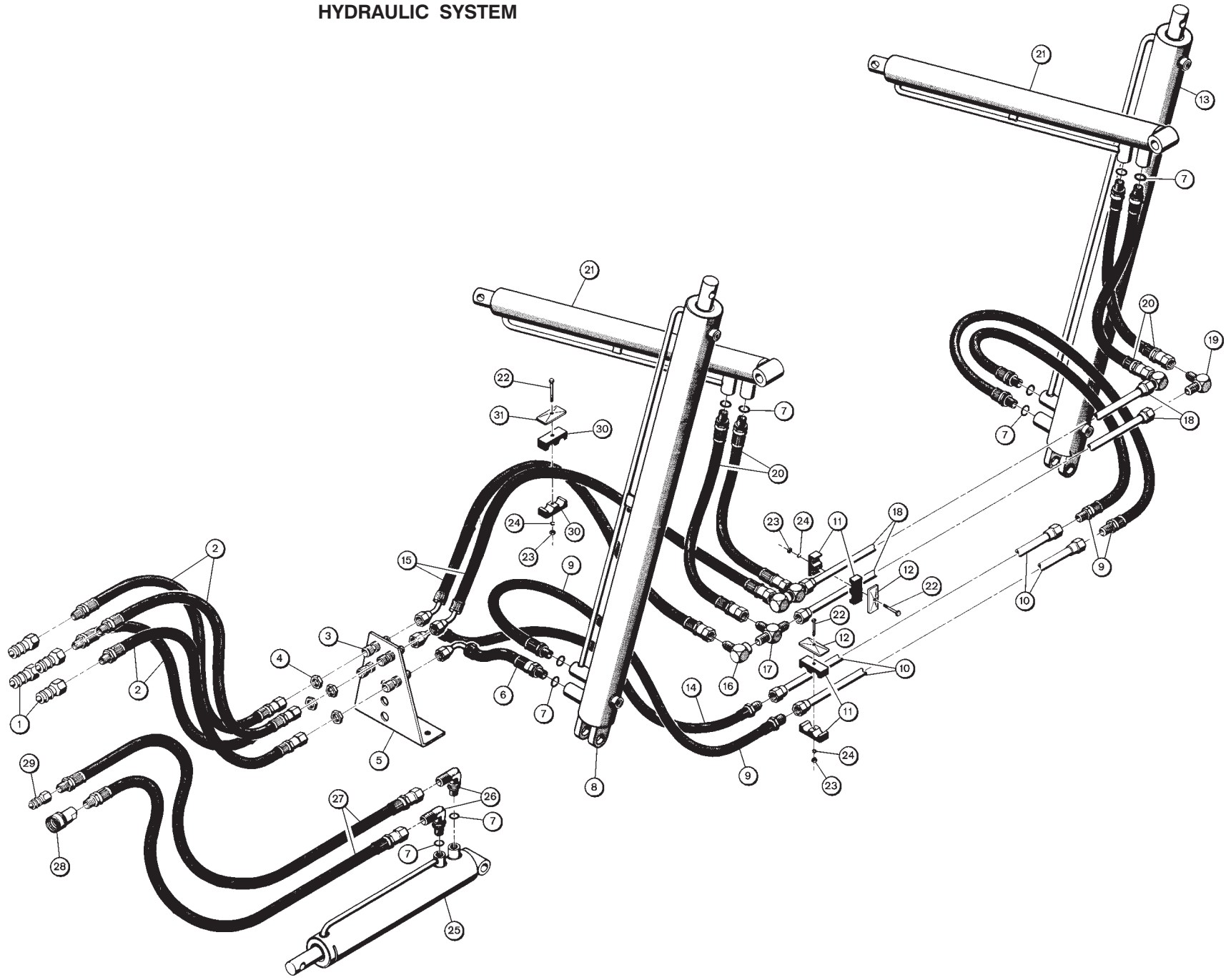
ELEVATOR FRAME, DUMP BOX & RELATED PARTS



ELEVATOR FRAME, DUMP BOX & RELATED PARTS

KEY	P/N	DESCRIPTION	USED
1	18030	Elevator frame assembly, 1310	1
1	18031	Elevator frame assembly, 1312	1
1	18068	Elevator frame assembly, 1314	1
1	18032	Elevator frame assembly, 1512	1
1	18033	Elevator frame assembly, 1514	1
2	----	Lift cylinder (see separate illustration for each cylinder)	2
3	93800	Pin, lift cylinder pivot, all carts, 1 1/4" dia. x 3 1/2" long	2
4	93697	Cotter pin, 5/16" dia. x 2" long	6
5	93796	Clevis pin, lift cylinder rod end to elevator frame, all carts, 1" dia. x 4 5/8" long	2
6	93987	Machinery washer, 1" shaft dia. x 14 ga.	2
7	58006	Bottom roller assembly (includes items 8 and 9)	2
8	58010	Bushing, bottom roller	A.R.
9	93802	Grease fitting, 1/4"-28 straight x 45/64" long	A.R.
10	58011	Pin assembly, bottom roller	2
11	38058	Pin assembly, dump box pivot	2
12	-----	Tilt cylinder (see separate illustration for each cylinder)	2
13	93793	Pin, tilt cylinder pivot, all carts, 1" dia. x 7 3/8" long	2
14	93792	Headless pin, tilt cylinder rod end to dump box, all carts, 1" dia. x 4 5/8" long	2
15	18046	Dump box assembly, 1310 (includes item 35)	1
15	18044	Dump box assembly, 1312 (includes item 35)	1
15	18069	Dump box assembly, 1314 (includes item 35)	1
15	18043	Dump box assembly, 1512 (includes item 35)	1
15	18045	Dump box assembly, 1514 (includes item 35)	1
16	38054	Ladder assembly, outside	1
17	38055	Ladder assembly, inside	1
18	90063	Decal, "BYRON Dump Chief"	2
19	90089	Decal, "1310" model number	A.R.
19	90090	Decal, "1312" model number	A.R.
19	90166	Decal, "1314" model number	A.R.
19	90091	Decal, "1512" model number	A.R.
19	90092	Decal, "1514" model number	A.R.
20	90096	Decal, "Operating Instructions"	1
21	90452	Decal, "Danger - keep clear of" etc.	1
22	-----	(Not assigned)	-
23	90225	Decal, "Grease" arrow	11
24	90080	Decal, SMV sign	1
25	51754	Reflector, red	4
25	51755	Reflector, amber	2
26	93052	Hex head capscrew, 3/8"-16 x 3/4" grade 5	2
27	93054	Hex head capscrew, 3/8"-16 x 1 1/4" grade 5	4
28	93057	Hex head capscrew, 3/8"-16 x 2" grade 5	4
29	93518	Locknut, 3/8"-16 hex, top lock	4
30	93453	Nut, 3/8"-16 hex	4
31	93578	Lockwasher, 3/8" split spring	6
32	-----	(Not assigned)	-
33	93130	Hex head capscrew, 3/4"-10 x 2" grade 5	8
34	93583	Lockwasher, 3/4" split spring	8
35	93820	Grease fitting, 1/4" straight, drive type	4

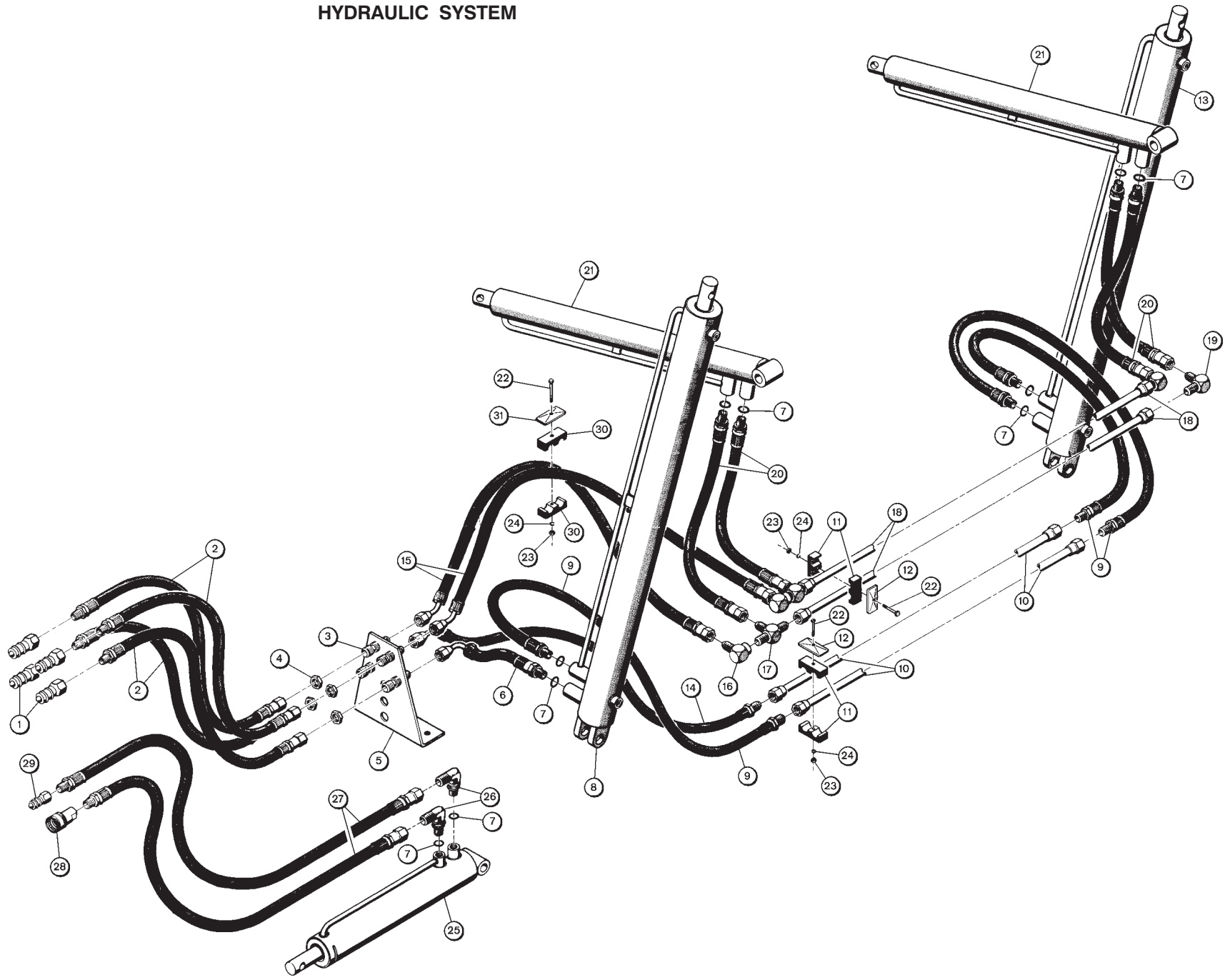
HYDRAULIC SYSTEM



HYDRAULIC SYSTEM

KEY	P/N	DESCRIPTION	USED
1	40070	Quick coupler, male half, 1/2" NPT female	4
2	43210	Hose assembly, 1/2" NPT straight male to -10 JIC straight female swivel, 162" long	4
3	45139	Bulkhead union, -10 JIC (includes jam nut)	4
4	45980	Jam nut, -10	A.R.
5	35819	Bracket, hose bulkhead	1
6	43215	Hose assembly, -8 SAE "O" ring straight male swivel to -10 JIC 90° female swivel, 26" long, 1300 series carts (includes "O" ring)	1
6	43212	Hose assembly, -8 SAE "O" ring straight male swivel to -10 JIC 90° female swivel, 36" long, 1500 series carts (includes "O" ring)	1
7	45878	"O" ring, -8	A.R.
8	41802	Front lift cylinder assembly, 1300 series carts, 5" x 48" (Refer to 1300 Front Lift Cylinder illustration on page 15 for internal parts)	1
8	41803	Front lift cylinder assembly, 1500 series carts, 5 x 74.5 (Refer to 1500 Front Lift Cylinder illustration on page 18 for internal parts)	
9	48069	Hose assembly, -8 SAE "O" ring straight male to -10 JIC straight male, 32" long (includes "O" ring)	3
10	48078	Tube assembly, 5/8" dia. x approx. 120" long, -10 JIC tube nuts, lift cylinder interconnecting, 1310 cart only	2
10	48051	Tube assembly, 5/8" dia. x approx. 144" long, -10 JIC tube nuts, lift cylinder interconnecting, 1312 and 1512 carts	2
10	48052	Tube assembly, 5/8" dia. x approx. 168" long, -10 JIC tube nuts, lift cylinder interconnecting, 1314 and 1514 carts	2
11	32059	Clamp block, 5/8" clamp diameter (order by the pair)	6 pair
12	32060	Clamp plate, 5/8" clamp block	6
13	41800	Rear lift cylinder assembly, 1300 series carts, 4 1/2" x 48" (Refer to 1300 Rear Lift Cylinder illustration on page 16 for internal parts)	1
13	41801	Rear lift cylinder assembly, 1500 series carts, 4 1/2" x 74 1/2" (Refer to 1500 Rear Lift Cylinder illustration on page 19 for internal parts)	1
14	43047	Hose assembly, -10 JIC 90° female swivel to -10 JIC straight male, 36" long, 1300 series cart	1
14	42873	Hose assembly, -10 JIC 90° female swivel to -10 JIC straight male, 44" long, 1500 series cart	1
15	43359	Hose assembly, -10 JIC 90° female swivel to -10 JIC straight female swivel, 60" long, 1300 series cart	2
15	43211	Hose assembly, -10 JIC 90° female swivel to -10 JIC straight female swivel, 102" long, 1500 series cart	2
16	45938	90° elbow adapter, -10 JIC male to 1/2" NPT female	2
17	45592	Adapter run tee, -10 JIC to 1/2" NPT	2
18	48079	Tube assembly, 5/8" dia. x approx. 126" long, -10 JIC tube nuts, tilt cylinder interconnecting, 1310 cart only	2
18	48053	Tube assembly, 5/8" dia. x approx. 150" long, -10 JIC tube nuts, tilt cylinder interconnecting, 1312 and 1512 carts	2
18	48054	Tube assembly, 5/8" dia. x approx. 174" long, -10 JIC tube nuts, tilt cylinder interconnecting, 1314 and 1315 carts	2
19	45105	90° male union elbow, -10 JIC	2
20	48074	Hose assembly, -8 SAE "O" ring straight male to -10 JIC straight female swivel, 60" long, 1300 series cart (includes "O" ring)	4
20	48075	Hose assembly, -8 SAE "O" ring straight male to -10 JIC straight female swivel, 49" long, 1500 series cart (includes "O" ring)	4
21	41798	Tilt cylinder assembly, 1300 series carts, 4 x 48" (Refer to 1300 Tilt Cylinder illustration on page 14 for internal parts)	2
21	41799	Tilt cylinder assembly, 1500 series carts, 4 x 69" (Refer to 1500 Tilt Cylinder illustration on page 17 for internal parts)	2
22	93033	Hex head capscrew, 5/16"-18 x 2 1/4" grade 5	7
23	93452	Nut, 5/16"-18 hex	7

HYDRAULIC SYSTEM

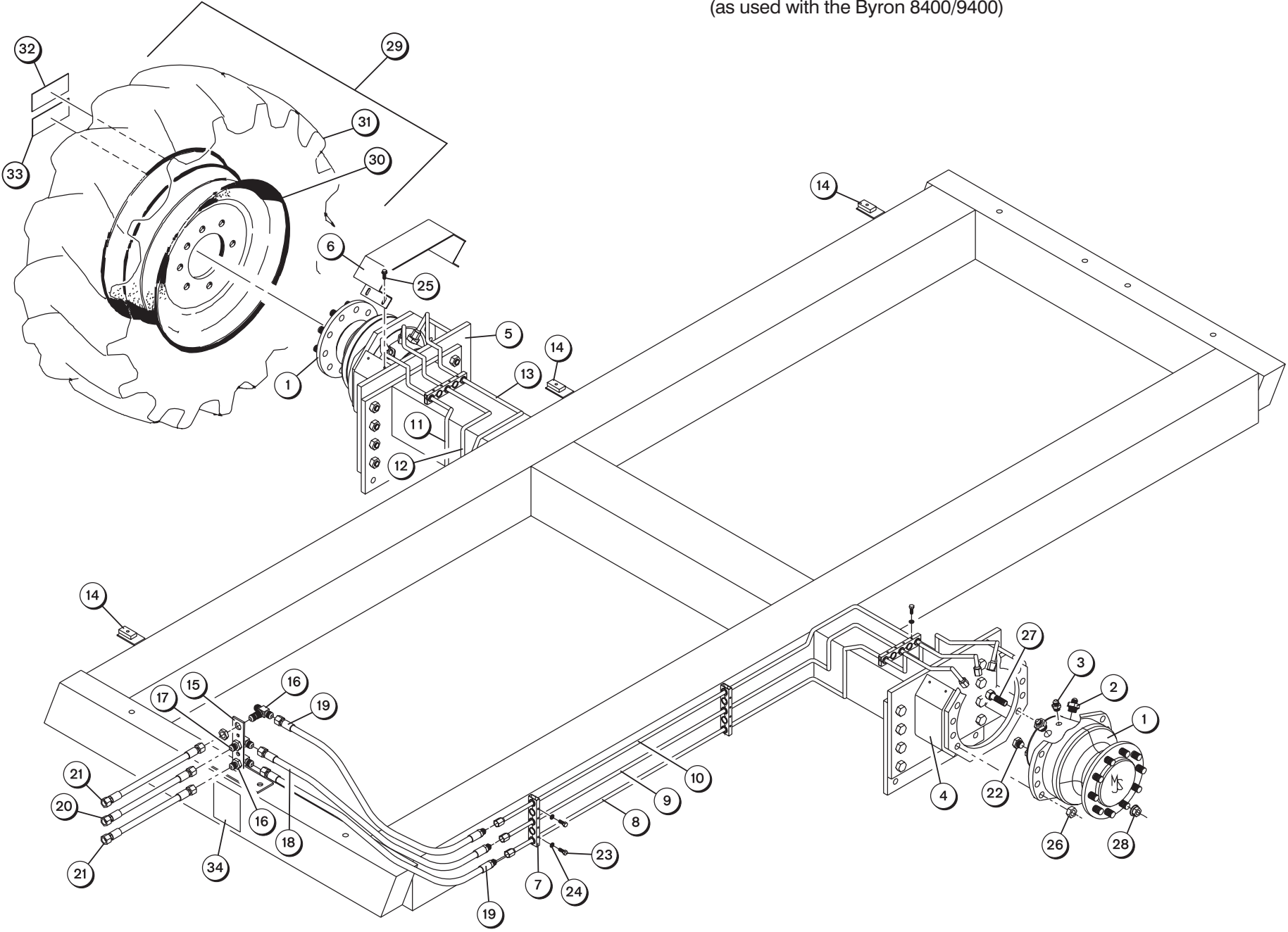


HYDRAULIC SYSTEM
(continued)

KEY	P/N	DESCRIPTION	USED
24	93577	Lockwasher, 5/16" split spring	7
25	41798	Tongue extension cylinder* (Refer to 1300 Tilt Cylinder illust. on page 14 for internal parts)	1
26	45385	90° male adapter elbow, -8 SAE "O" ring to -10 JIC* (includes "O" ring)	2
27	48065	Hose assembly, 1/2" NPT straight male to -10 JIC straight female swivel, 144" long*	2
28	40069	Quick coupler, female half, 1/2" female NPT*	1
29	40070	Quick coupler, male half, 1/2" female NPT*	1
30	32095	Clamp block, 7/8" clamp diameter (order by the pair)	1 pair
31	32096	Clamp plate, 7/8" clamp block	1

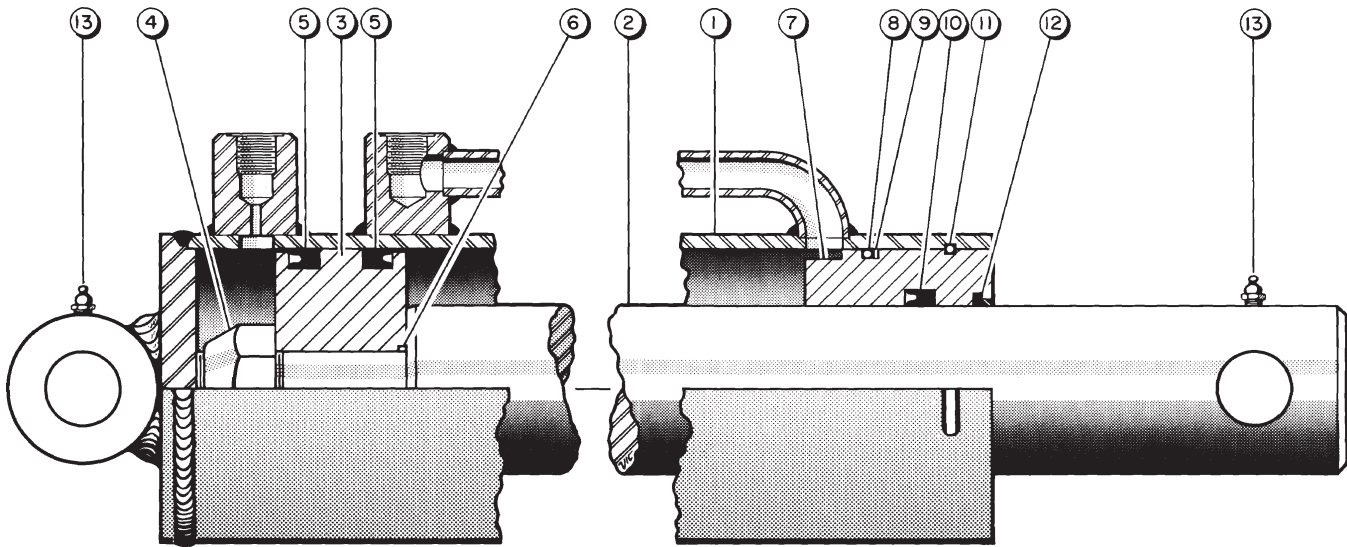
*Parts used with optional extension cylinder

POWERED WHEELS HYDRAULICS, S11 WHEEL MOTORS
(as used with the Byron 8400/9400)



POWERED WHEELS HYDRAULICS, S11 WHEEL MOTORS
(as used with the Byron 8400/9400)

KEY	P/N	DESCRIPTION	USED
1	42776	Wheel motor (Refer to S11 Wheel Motor Internal Parts illustration on page 27)	2
2	45323	Straight adapter, -12 SAE "O" ring to -8 JIC male	4
3	45313	Straight adapter, -8 SAE "O" ring to -8 JIC male	2
4	34445	Wheel motor mount, L.H.	1
5	34447	Wheel motor mount, R.H.	1
6	23109	Guard, wheel motor	2
7	34448	Multi-clamp, 5-hole, 2"	6
-	51044	Split bushing, multi-clamp, 1/2" tube dia. (not shown)	18
8	42592	Tube assembly, L.H. lower	1
9	42594	Tube assembly, L.H. center	1
10	42596	Tube assembly, L.H. top	1
11	42597	Tube assembly, R.H. lower	1
12	42599	Tube assembly, R.H. center	1
13	42601	Tube assembly, R.H. top	1
14	34530	Spacer, lift cylinder tubes	3
15	34455	Bracket, hose bulkhead	1
16	45191	Bulkhead branch tee, -12 JIC (includes jam nut)	2
17	45190	Bulkhead branch tee, -10 JIC (includes jam nut)	1
18	42617	Hose assembly, -10 JIC straight female swivel to -8 JIC straight male, 54" long	2
19	42616	Hose assembly, -12 JIC straight female swivel to -8 JIC straight male, 54" long	4
20	42103	Hose assembly, -10 JIC straight female swivel both ends, 108" long	1
-	45030	Plug, -10 JIC (not shown, used to plug hose end when cart is disconnected from power unit)	1
21	42102	Hose assembly, -12 JIC straight female swivel both ends, 108" long	2
-	45031	Plug, -12 JIC (not shown, used to plug hose ends when cart is disconnected from power unit)	2
22	45055	Plug, -8 SAE "O" ring	A.R.
23	93032	Hex head capscrew, 5/16"-18 x 2" grade 5	12
24	93577	Lockwasher, 5/16" split spring	12
25	93384	Hex head capscrew, 5/16"-18 x 1" serrated flange, self-locking, grade 5	8
26	93475	Nut, 7/8"-9 hex, grade 8	16
27	94209	Hex head capscrew, 7/8"-9 x 2-1/2" grade 8	16
28	94272	Nut, wheel, M20 x 1.5, flanged	20
29	52653	Tire and wheel assembly complete, 24.5 x 32 12-ply tire and tube mounted on 21 x 32 10-hole rim for S11 wheel motor	2
30	52652	Wheel, 21 x 32 10-hole for S11 wheel motor	A.R.
-	52429	Inner tube, 24.5 x 32 (not shown)	A.R.
31	51335	Tire, 24.5 x 32 12-ply	A.R.
29	52654	Tire and wheel assembly complete, 20.8 x 38 10-ply tubeless tire mounted on 18 x 38 10-hole rim for S11 wheel motor	2
30	52651	Wheel, 18 x 38 10-hole for S11 wheel motor	A.R.
31	51822	Tire, 20.8 x 38 10-ply	A.R.
32	90264	Decal, tire fluid, used on tire opposite dump side	1
33	90224	Decal, wheel lug torque instructions	2
34	90478	Decal, S11 towing instructions	1

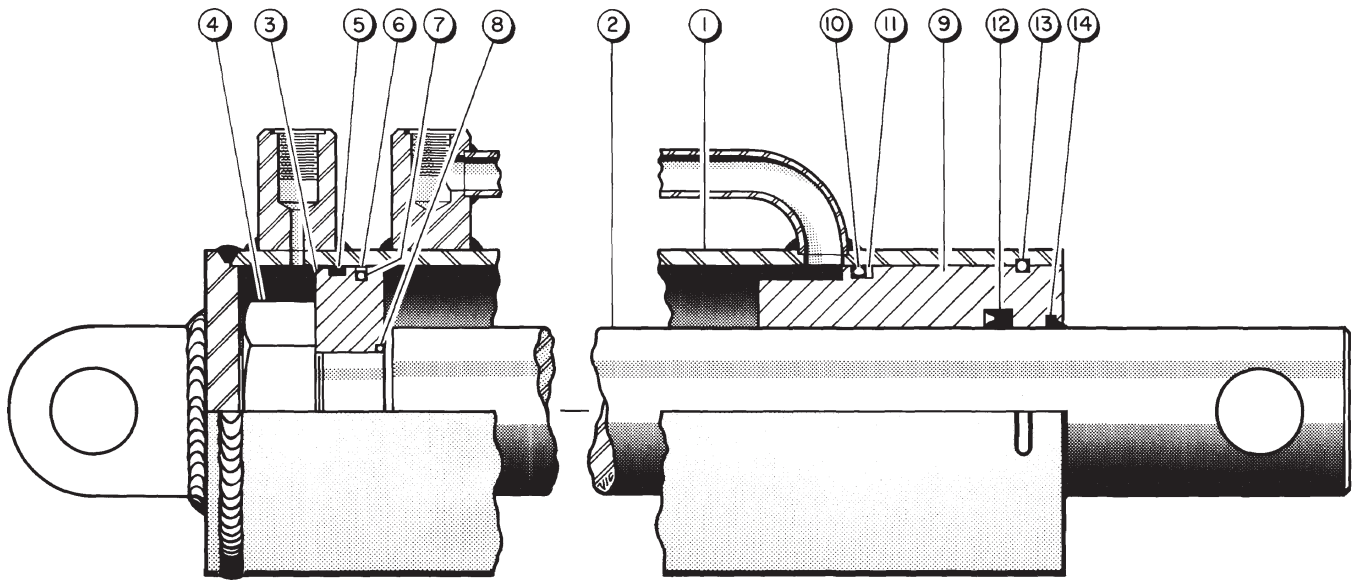


TP-312

1300 TILT CYLINDER

KEY	P/N	DESCRIPTION	USED
A	41798	Hydraulic cylinder assembly complete, 4" bore x 48" stroke x 2" rod diameter, -8 SAE "O" ring ports (includes items 1 - 13)	-
B	48090	Seal kit	A.R.
1	----	Cylinder barrel assembly (not sold separately)	1
2	48026	Rod	1
3	48094	Piston	1
4	48014	Locknut	1
5	----	"U" cup*	1
6	----	"O" ring*	1
7	48092	Gland*	1
8	----	"O" ring*	1
9	----	Backup washer*	1
10	----	"U" cup*	1
11	----	Retaining ring*	1
12	----	Wiper*	1
13	93809	Grease fitting, 1/8" NPT straight x short	2

*Included in (B) seal kit - not sold separately



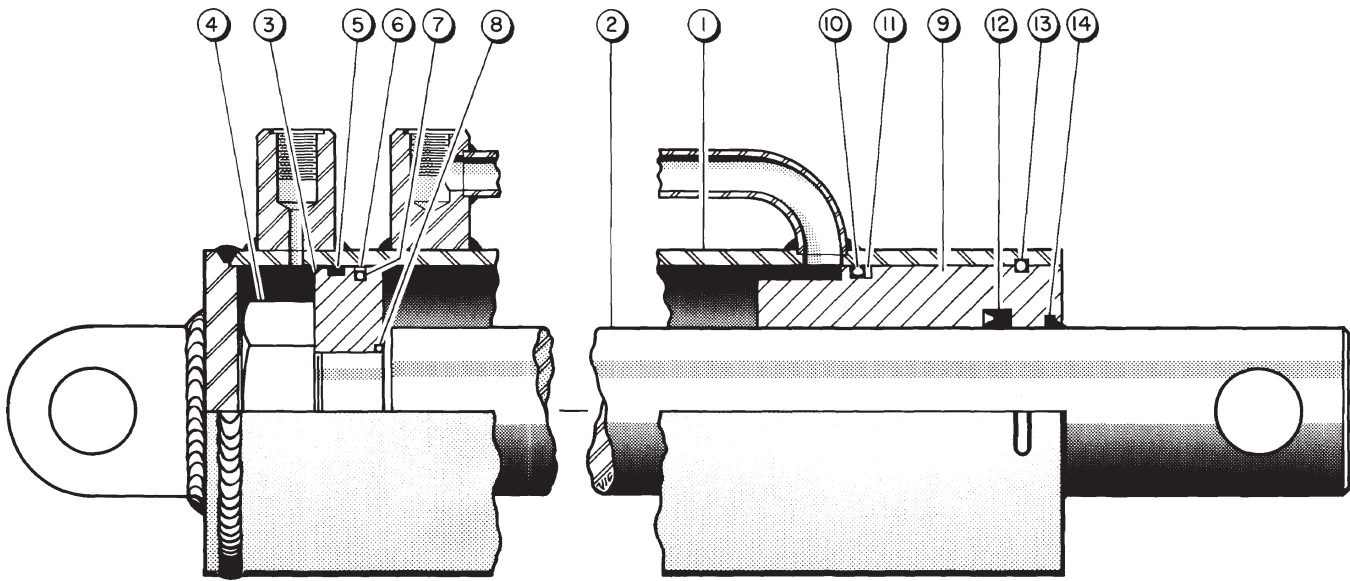
TP-313

1300 FRONT LIFT CYLINDER

KEY	P/N	DESCRIPTION	USED
A	41802	Hydraulic cylinder assembly complete, 5" bore x 48" stroke x 2-3/16" rod diameter, -8 SAE "O" ring ports (includes items 1 - 14)	-
B	48106	Seal kit*	A.R.
1	----	Cylinder barrel assembly (not sold separately)	1
2	48087	Rod	1
3	48104	Piston*	1
4	48097	Nut*	1
5	----	Bearing ring**	1
6	----	Seal assembly**	*
7	----	"O" ring, piston outer**	1
8	----	"O" ring, piston inner**	1
9	48105	Gland*	1
10	----	"O" ring**	1
11	----	Backup washer**	1
12	----	"U" cup**	1
13	----	Retaining ring**	1
14	----	Wiper**	1

*Interchangeable with same parts in #41803 cylinder

**Included in (B) seal kit - not sold separately



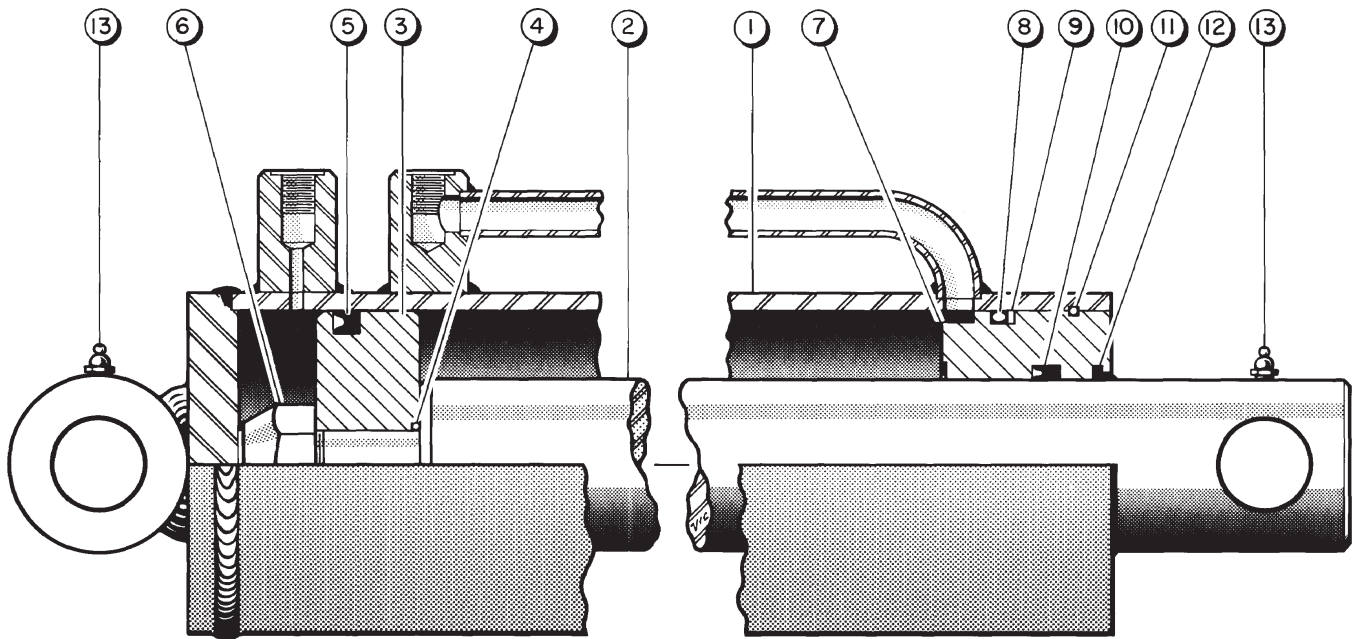
TP-313

1300 REAR LIFT CYLINDER

KEY	P/N	DESCRIPTION	USED
A	41800	Hydraulic cylinder assembly complete, 4-1/2" bore x 48" stroke x 2-3/16" rod diameter, -8 SAE "O" ring ports (includes items 1 - 14)	-
B	48095	Seal kit*	A.R.
1	----	Cylinder barrel assembly (not sold separately)	1
2	48087	Rod	1
3	48098	Piston*	1
4	48097	Nut*	1
5	----	Bearing ring**	1
6	----	Seal assembly**	*
7	----	"O" ring, piston outer**	1
8	----	"O" ring, piston inner**	1
9	48099	Gland*	1
10	----	"O" ring**	1
11	----	Backup washer**	1
12	----	"U" cup**	1
13	----	Retaining ring**	1
14	----	Wiper**	1

*Interchangeable with same parts in #41801 cylinder

**Included in (B) seal kit - not sold separately

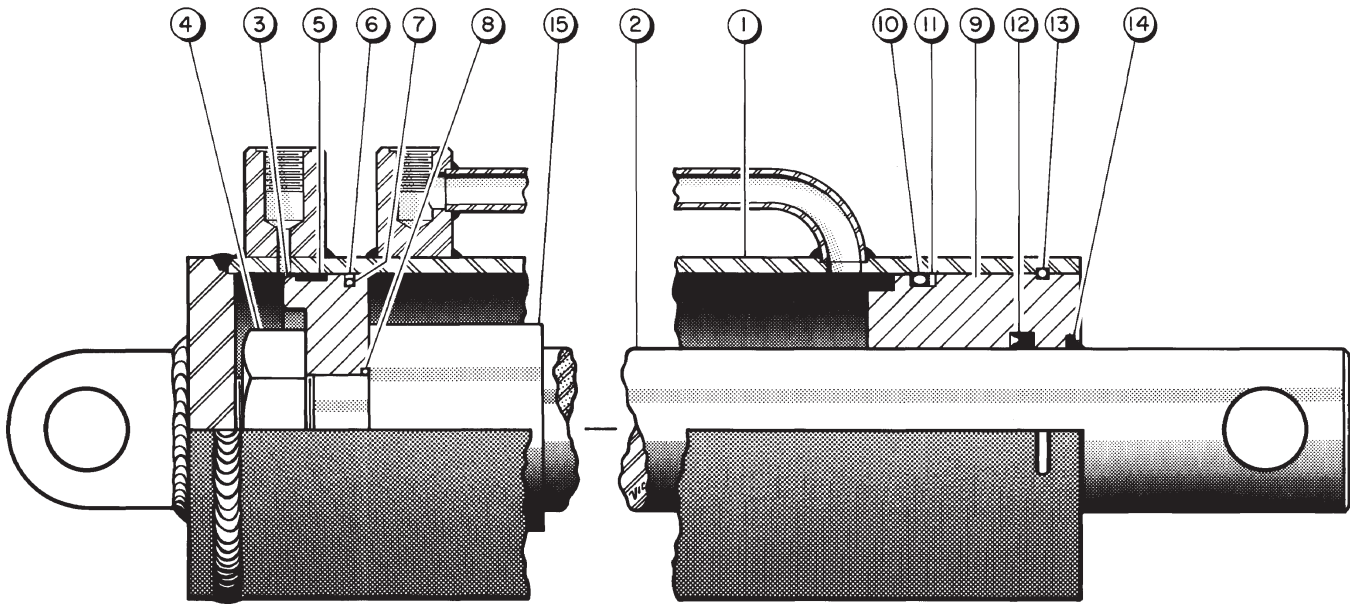


TP-314

1500 TILT CYLINDER

KEY	P/N	DESCRIPTION	USED
A	41799	Hydraulic cylinder assembly complete, 4" bore x 69" stroke x 2-1/2" rod diameter, -8 SAE "O" ring ports (includes items 1 - 13)	-
B	48008	Seal kit	A.R.
1	----	Cylinder barrel assembly (not sold separately)	1
2	48012	Rod	1
3	48013	Piston	1
4	----	"O"-ring*	1
5	----	"U"-cup*	1
6	48014	Locknut	1
7	48015	Gland	1
8	----	"O" ring*	1
9	----	Backup washer*	1
10	----	"U" cup*	1
11	----	Retaining ring*	1
12	----	Wiper*	1
13	93809	Grease fitting, 1/8" NPT straight x short	2

*Included in (B) seal kit - not sold separately

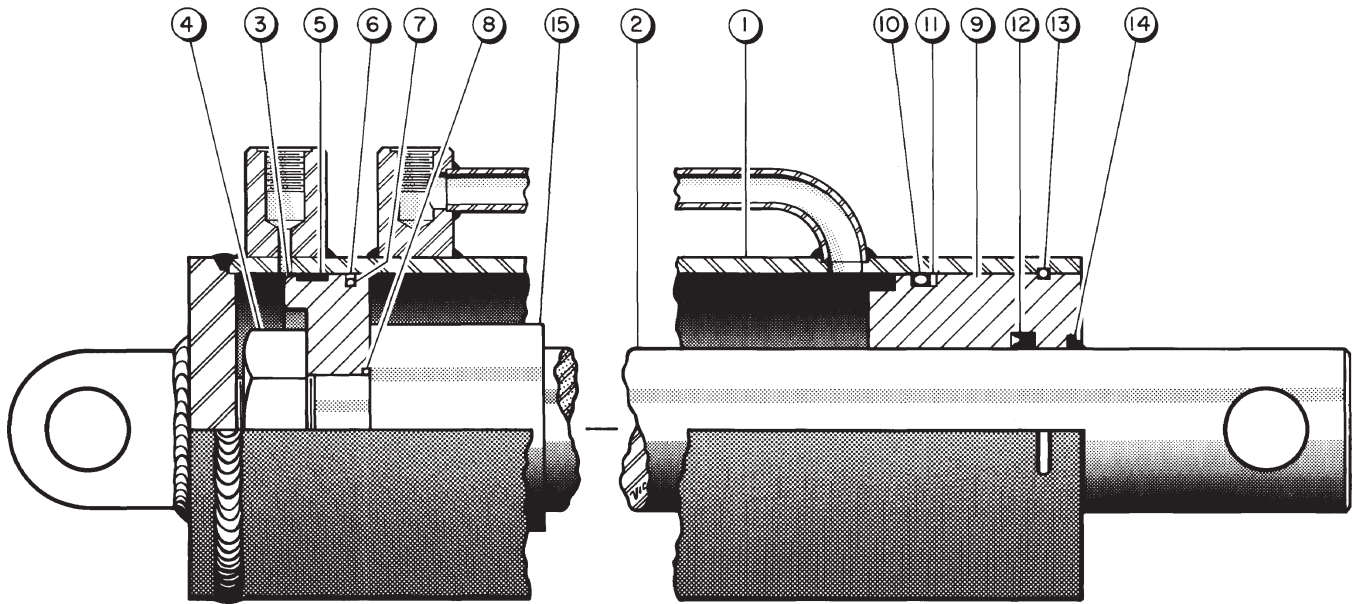


TP-315

1500 FRONT LIFT CYLINDER

KEY	P/N	DESCRIPTION	USED
A	41803	Hydraulic cylinder assembly complete, 5" bore x 74-1/2" stroke x 2-3/16" rod diameter, -8 SAE "O" ring ports (includes items 1 - 15)	-
B	48106	Seal kit	A.R.
1	----	Cylinder barrel assembly (not sold separately)	1
2	48108	Rod	1
3	48104	Piston	1
4	48097	Nut	1
5	----	Bearing ring*	1
6	----	Seal assembly*	*
7	----	"O" ring, piston outer*	1
8	----	"O" ring, piston inner*	1
9	48105	Gland	1
10	----	"O" ring*	1
11	----	Backup washer*	1
12	----	"U" cup*	1
13	----	Retaining ring*	1
14	----	Wiper*	1
15	48101	Spacer	1

*Included in (B) seal kit - not sold separately



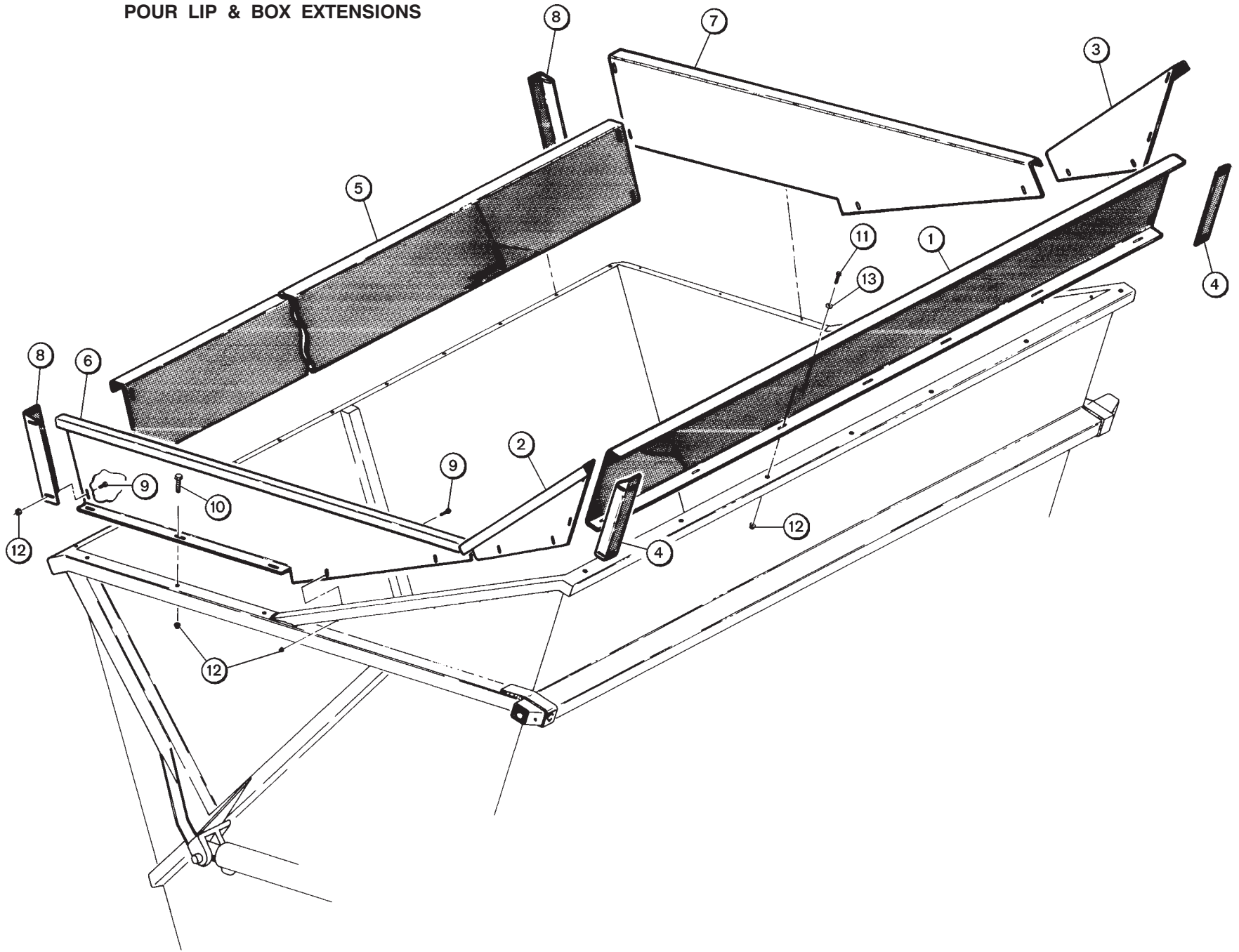
TP-315

1500 REAR LIFT CYLINDER

KEY	P/N	DESCRIPTION	USED
A	41801	Hydraulic cylinder assembly complete, 4-1/2" bore x 74-1/2" stroke x 2-3/16" rod diameter, -8 SAE "O" ring ports (includes items 1 - 15)	-
B	48095	Seal kit	A.R.
1	----	Cylinder barrel assembly (not sold separately)	1
2	48108	Rod	1
3	48098	Piston	1
4	48097	Nut	1
5	----	Bearing ring*	1
6	----	Seal assembly*	*
7	----	"O" ring, piston outer*	1
8	----	"O" ring, piston inner*	1
9	48099	Gland	1
10	----	"O" ring*	1
11	----	Backup washer*	1
12	----	"U" cup*	1
13	----	Retaining ring*	1
14	----	Wiper*	1
15	48101	Spacer	1

*Included in (B) seal kit - not sold separately

POUR LIP & BOX EXTENSIONS

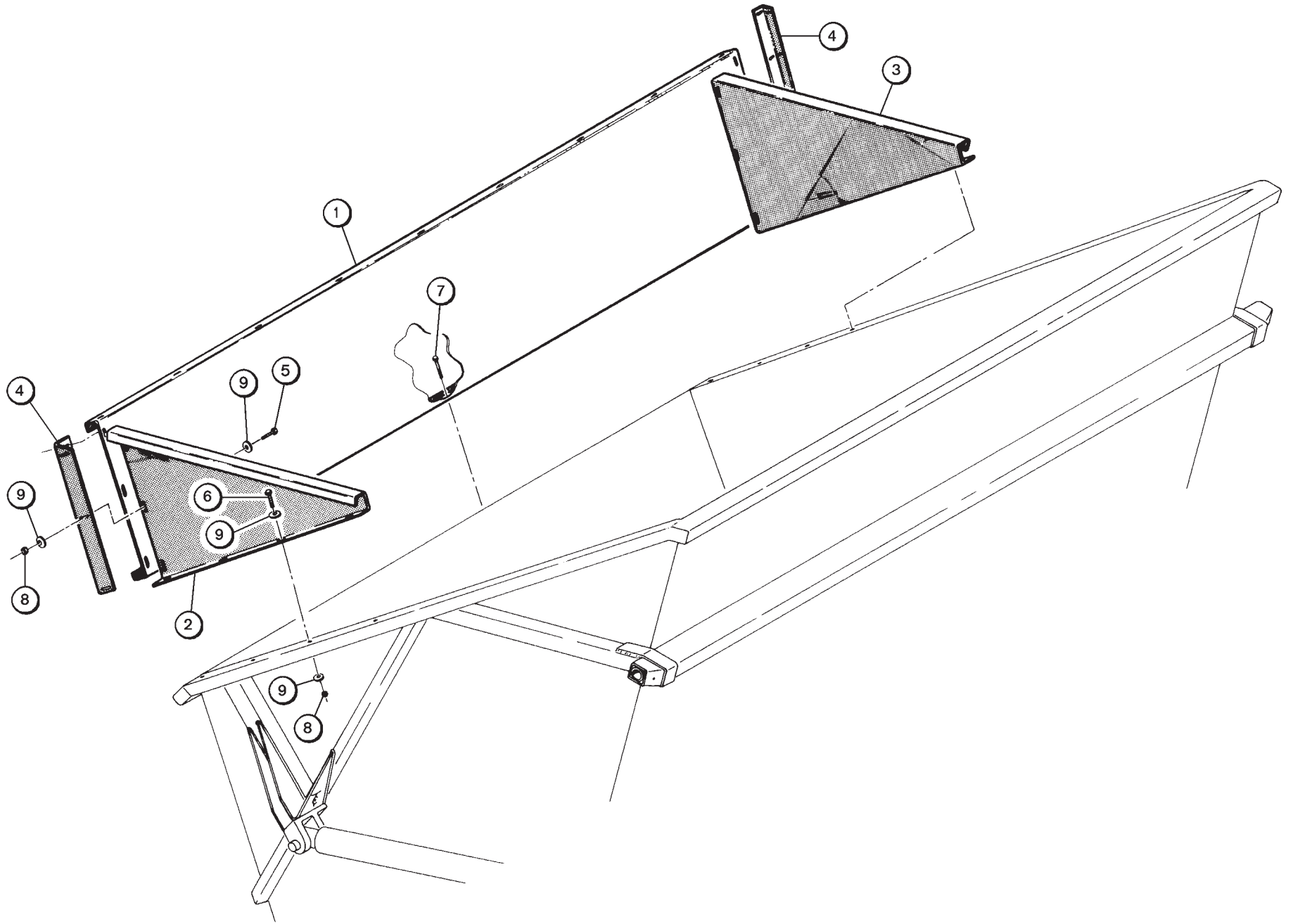


POUR LIP & BOX EXTENSIONS

KEY	P/N	DESCRIPTION	USED
-	60141	Kit, pour lip extension, 10 ft. (kits include items 1 - 4 and all hardware to install)	A.R.
-	60153	Kit, pour lip extension, 12 ft. (kits include items 1 - 4 and all hardware to install)	A.R.
-	60157	Kit, pour lip extension, 14 ft. (kits include items 1 - 4 and all hardware to install)	A.R.
-	60142	Kit, sides and rear extension, 1310 cart (kits include items 5 - 8 and all hardware to install)	A.R.
-	60146	Kit, sides and rear extension, 1312 cart (kits include items 5 - 8 and all hardware to install)	A.R.
-	60150	Kit, sides and rear extension, 1314 cart (kits include items 5 - 8 and all hardware to install)	A.R.
-	60154	Kit, sides and rear extension, 1512 cart (kits include items 5 - 8 and all hardware to install)	A.R.
-	60158	Kit, sides and rear extension, 1514 cart (kits include items 5 - 8 and all hardware to install)	A.R.
1	28020	Extension, pour lip, 10 ft.	1
1	28021	Extension, pour lip, 12 ft.	1
1	28022	Extension, pour lip, 14 ft.	1
2	28026	Extension, pour lip R.H. side*	1
3	28025	Extension, pour lip L.H. side*	1
4	28027	Angle, corner	2
5	28020	Extension, box rear, 10 ft.*	1
5	28021	Extension, box rear, 12 ft.*	1
5	28022	Extension, box rear, 14 ft.*	1
6	28024	Extension, box R.H. side, 1300 series carts*	1
6	28066	Extension, box R.H. side, 1500 series carts*	1
7	28023	Extension, box L.H. side, 1300 series carts*	1
7	28065	Extension, box L.H. side, 1500 series carts*	1
8	28027	Angle, corner	2
9	93384	Hex head capscrew, 5/16"-18 x 1" serrated flange, grade 5	34
10	93038	Hex head capscrew, 5/16"-18 x 3 1/2"	6
11	93040	Hex head capscrew, 5/16"-18 x 4"	10
12	93522	Locknut, 5/16"-18 hex serrated flange	50
13	93602	Flatwasher, 5/16"	16

* R.H. and L.H. parts determined as though you were standing in the dump box facing the pouring lip.

DROP SIDE BOX EXTENSION, 1512 SERIES CART

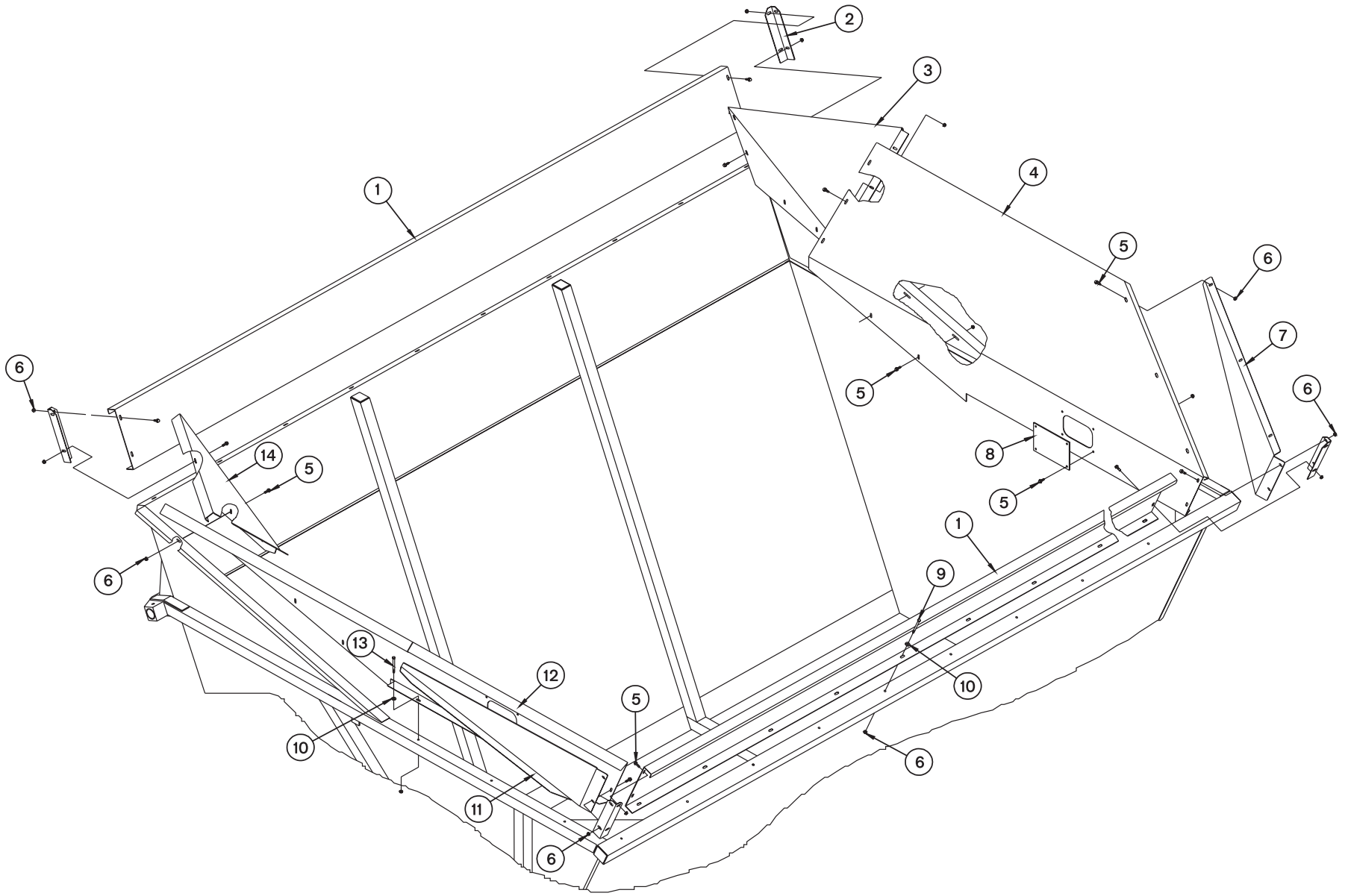


DROP SIDE BOX EXTENSION, 1512 SERIES CART

KEY	P/N	DESCRIPTION	USED
1	28017	Extension, low side, 12 ft.	1
2	28018	Extension, low side, R.H.*	1
3	28019	Extension, low side, L.H.*	1
4	28015	Corner angle, extension support	2
5	93384	Hex head capscrew, 5/16"-18 x 1" hex serrated flange	12
6	93038	Hex head capscrew, 5/16"-18 x 3 1/2" grade 5	8
7	93040	Hex head capscrew, 5/16"-18 x 4" grade 5	9
8	93522	Locknut, 5/16"-18 hex serrated flange	29
9	93602	Flatwasher, 5/16"	17

* R.H. and L.H. parts determined as though you were standing in the dump box facing the pouring lip.

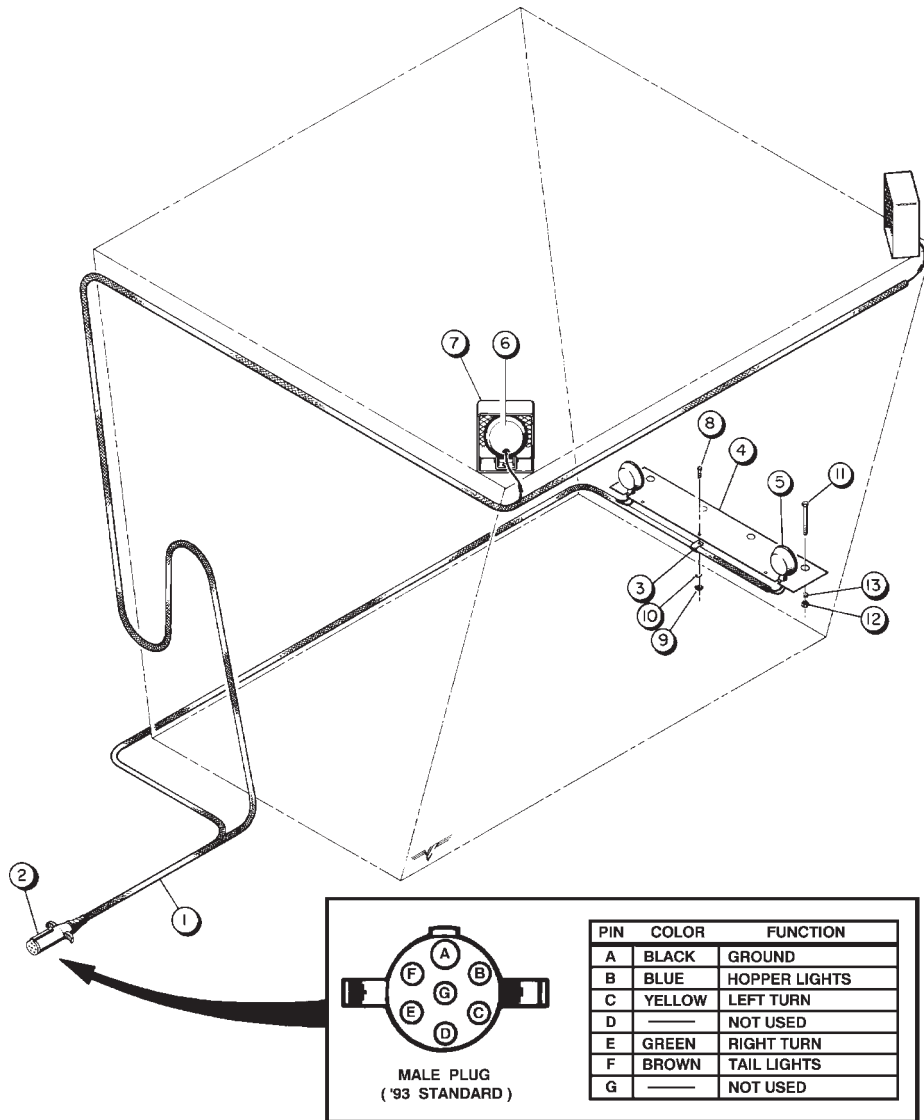
FLARED EXTENSIONS, 1500 SERIES



FLARED EXTENSIONS, 1500 SERIES

KEY	P/N	DESCRIPTION	USED
-	60384	Kit, flared extensions, 1514 (kit includes items 1 - 14)	A.R.
1	28022	Side extension, 14 ft.	2
2	28027	Angle, corner	4
3	22203	Gusset, R.H.*	1
4	22200	End extension, R.H.*	1
5	93384	Hex head capscrew, 5/16-18 x 1" serrated flange, grade 5	54
6	93522	Locknut, 5/16"-18 hex serrated flange	70
7	32888	End support, R.H.*	1
8	22729	Window, end extension	2
9	93040	Hex head capscrew, 5/16"-18 x 4" grade 5	10
10	93602	Flatwasher, 5/16"	16
11	22205	End support, L.H.*	1
12	22199	End extension, L.H.*	1
13	93038	Hex head capscrew, 5/16"-18 x 3 1/2" grade 5	1
14	22202	Gusset, L.H.*	1

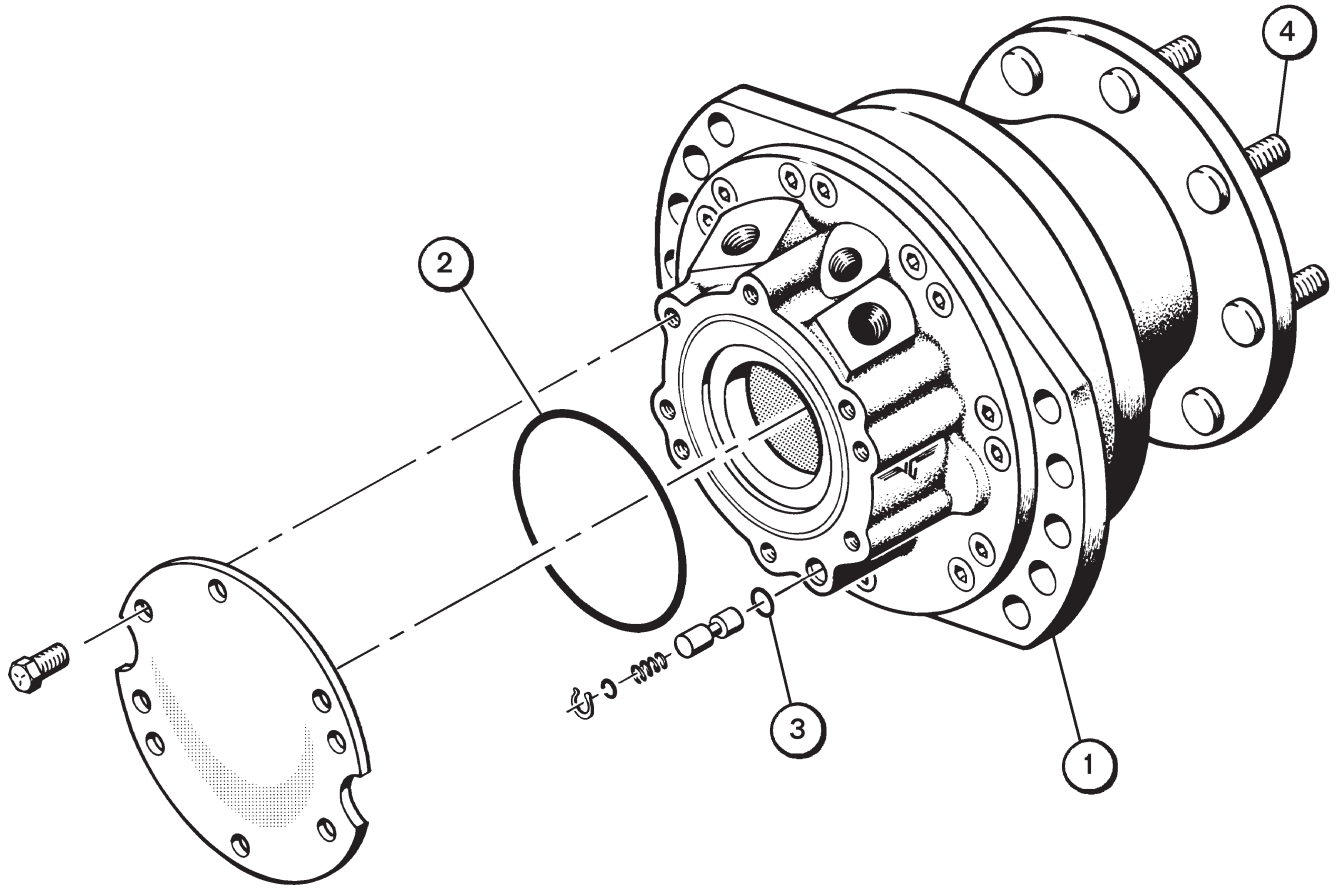
* R.H. and L.H. parts are determined as though you were standing in the dump box facing the pouring lip.



TP-360

LIGHTS & WIRING

KEY	P/N	DESCRIPTION	USED
-	60493	Light kit, 1300 series carts (includes items 1 - 13)	A.R.
-	60494	Light kit, 1500 series carts (includes items 1 - 13)	A.R.
1	----	Wiring harness (obtain wire, terminals and loom locally)	-
2	70066	Plug, 6-pin male connector, used to connect to 1992 and earlier Byron 8400	1
2	70335	Plug, 7-pin male connector, used to connect to 1993 and newer Byron 8400	1
3	93877	Loom clip, wiring harness	16 - 18
4	32242	Tail light mount plate, 1300 Series cart	1
4	32243	Tail light mount plate, 1500 Series cart	1
5	70226	Tail light assembly, stud mount	2
6	70001	Flood light assembly (includes mounting bracket)	2
7	32757	Guard, flood light	2
8	93028	Hex head capscrew, 5/16"-18 x 1" grade 5	3
9	93452	Nut, 5/16"-18 hex	3
10	93577	Lockwasher, 5/16" split spring	3
11	93123	Hex head capscrew, 5/8"-11 x 10" grade 5	2
12	93457	Nut, 5/8"-11 hex	2
13	93582	Lockwasher, 5/8" split spring	2

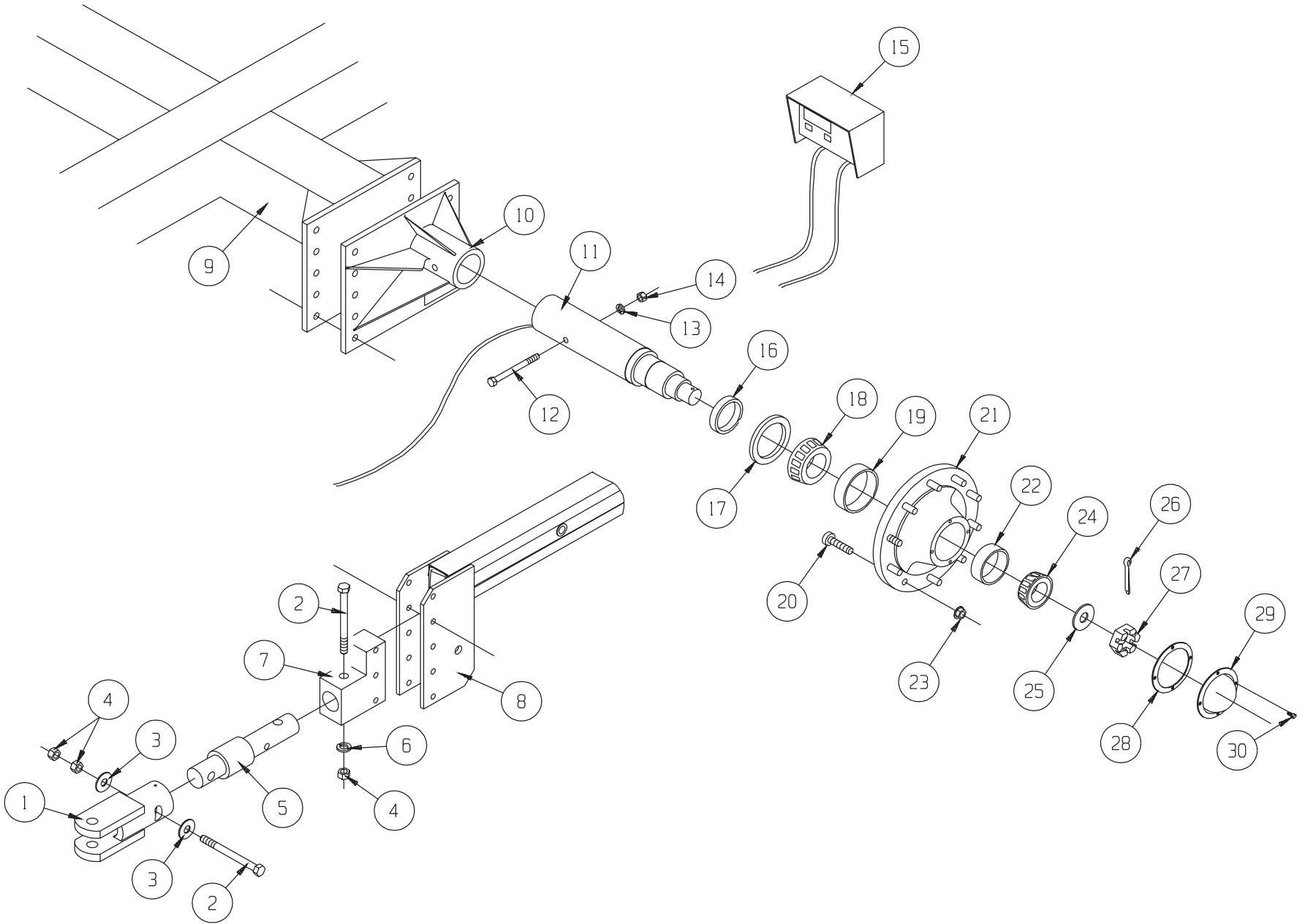


TP-439

S11 WHEEL MOTOR INTERNAL PARTS

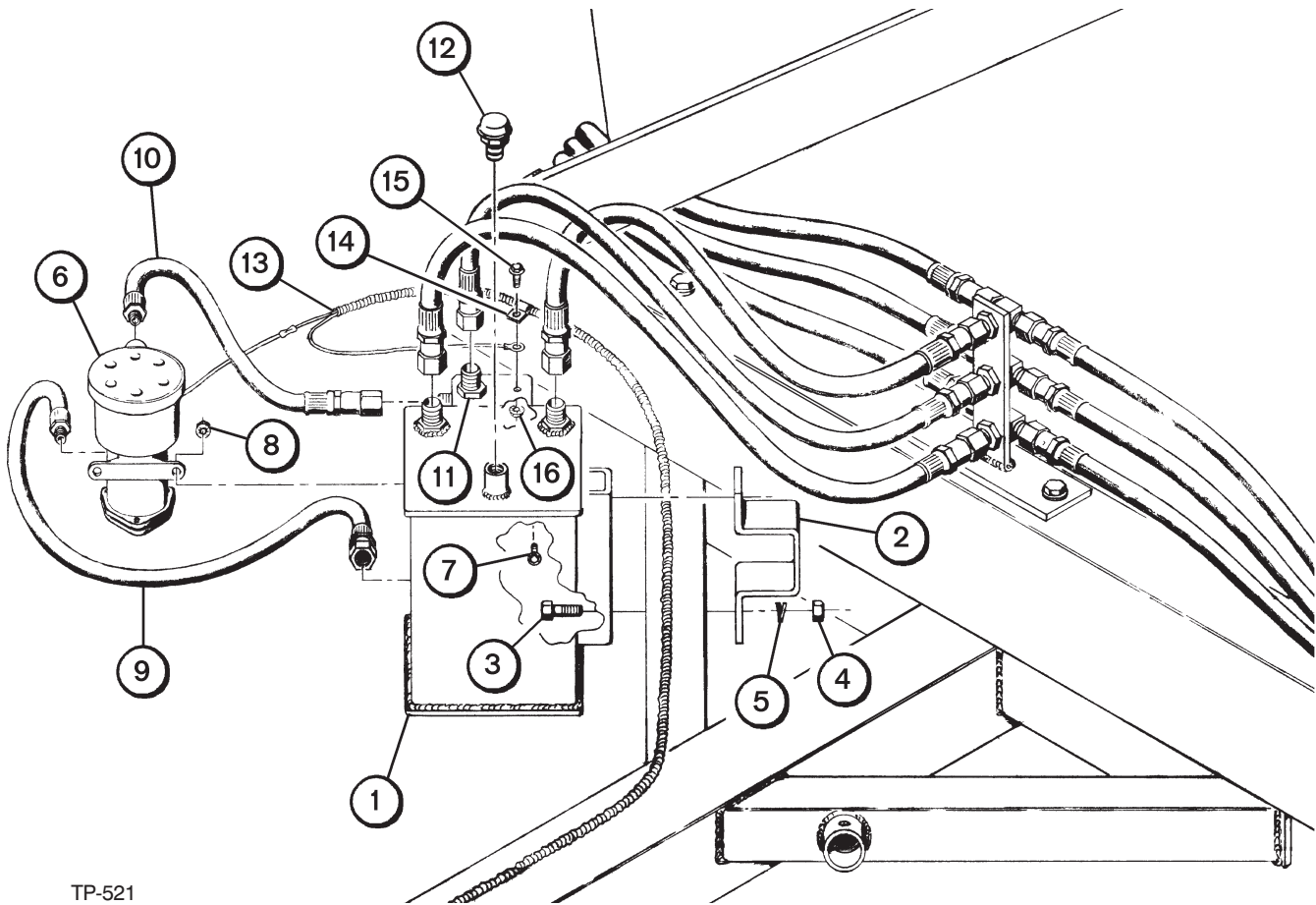
KEY	P/N	DESCRIPTION	USED
1	42776	Wheel motor assembly complete	2
2	42487	"O" ring, cover	1
3	42692	"O" ring, spool	1
4	42481	Stud, wheel	10

DUMP CART WEIGHT SCALE KIT



DUMP CART WEIGHT SCALE KIT

KEY	P/N	DESCRIPTION	USED
1	32672	Scale tongue	1
2	93442	Hex head capscrew, 1"-8 x 6 1/2" grade 5	2
3	93610	Flatwasher, 1" type A wide	2
4	93460	Nut, 1"-8 hex	3
5	70278	Load cell, cart hitch	1
6	93585	Lockwasher, 1" split spring	1
7	32669	Scale hitch block	1
8	38025	Inner pole assembly (all carts)	1
9	----	Cart frame	-
10	32667	Spindle base assembly, scale L.H.	1
-	32668	Spindle base assembly, scale R.H.	1
11	52064	Spindle, weight scale	2
12	93141	Hex head capscrew, 3/4"-10 x 6 1/2" grade 5	2
13	93583	Lockwasher, 3/4" split spring	2
14	93458	Nut, 3/4"-10 hex	2
15	70276	Indicator, cart weight scale	1
16	52068	Bushing, inner seal	2
17	58024	Seal, inner	2
18	58021	Bearing cone, inner	2
19	58018	Bearing cup, inner	2
20	93415	Wheel stud	20
21	58015	Hub assembly (includes items 19, 20 and 22)	2
22	58027	Bearing cup, outer	2
23	93553	Nut, 3/4"-16 hex, flanged wheel	20
24	58030	Bearing cone, outer	2
25	93650	Flatwasher, 2"	2
26	93700	Cotter pin, 5/16" x 3"	2
27	93574	Nut, 2"-12 hex slotted	2
28	52059	Gasket, dust cap	2
29	58033	Dust cap	2
30	93027	Hex head capscrew, 5/16"-18 x 3/4" grade 5	16



TP-521

TOWING / WHEEL MOTOR PRESSURIZATION KIT

KEY	P/N	DESCRIPTION	USED
A	60870	Towing/Wheel Motor Pressurization Kit (includes items 1 - 16)	A.R.
1	43443	Reservoir, towing/wheel motor pressurization kit	1
2	36223	Mount, reservoir	1
3	93104	Hex head capscrew, 5/8"-11 x 1-1/2" grade 5	2
4	93457	Nut, 5/8"-11 hex	2
5	93582	Lockwasher, 5/8" split spring	2
6	42099	Pump, wheel motor pressurization	1
7	93377	Machine screw, 1/4"-20 x 3/4" hex serrated flange, self-locking, grade 5	1
8	93520	Locknut, 1/4"-20 hex serrated flange, self-locking	1
9	43445	Hose assembly, -10 JIC straight female swivel to -4 male NPT, 15" long	1
10	43444	Hose assembly, -6 JIC straight female swivel to -4 male NPT, 15" long	1
11	45165	90° bulkhead elbow, -10 JIC (includes jam nut)	1
12	40079	Breather, 1/2" NPT male	1
13	----	Wire harness and plug assembly (order parts individually)	-
-	70213	Wire, 14 ga. black x 20' long	1
-	88583	Wire, 14 ga. red x 20' long	1
-	88510	Wire loom, 3/8" x 20' long	1
-	70229	Ring terminal, 12-10 ga., 1/2"	1
-	70787	Connector, cigar lighter receptacle (not shown)	1
-	88733	Shrink tubing, 1/4" x 24"	1
14	93880	Loom clamp, 3/8"	1
15	93384	Machine screw, 5/16"-18 x 1" hex serrated flange, self-locking, grade 5	1
16	93522	Locknut, 5/16"-18 hex serrated flange, self-locking	1